

For Research Use Only

GYS2 Recombinant antibody

Catalog Number: 85122-4-RR



Basic Information

Catalog Number:

85122-4-RR

Concentration:

1000 µg/ml

Source:

Rabbit

Isotype:

IgG

Immunogen Catalog Number:

AG18012

GenBank Accession Number:

BC126310

GeneID (NCBI):

2998

UNIPROT ID:

P54840

Full Name:

glycogen synthase 2 (liver)

Calculated MW:

703 aa, 81 kDa

Observed MW:

81 kDa

Purification Method:

Protein A purification

CloneNo.:

242595F10

Recommended Dilutions:

WB 1:5000-1:50000

Applications

Tested Applications:

WB, ELISA

Species Specificity:

human, mouse, rat

Positive Controls:

WB : mouse liver tissue,

Background Information

GYS2 (Glycogen Synthase 2) is a key enzyme involved in the synthesis of glycogen in the liver. It catalyzes the addition of glucose molecules to the growing glycogen chain, playing a crucial role in maintaining glucose homeostasis. GYS2 is essential for liver glycogen synthesis, which acts as a critical energy reserve for maintaining blood glucose levels, especially during fasting or prolonged exercise. Impairment of GYS2 function can lead to glycogen storage disease type 0 (GSD-0), characterized by hypoglycemia and liver glycogen deficiency. The GYS2 is highest expressed in the liver, and its expression in liver was significantly higher than other tissues. (PMID:39150597; PMID:37574425)

Storage

Storage:

Store at -20°C. Stable for one year after shipment.

Storage Buffer:

PBS with 0.02% sodium azide and 50% glycerol pH 7.3.

Aliquoting is unnecessary for -20°C storage

For technical support and original validation data for this product please contact:

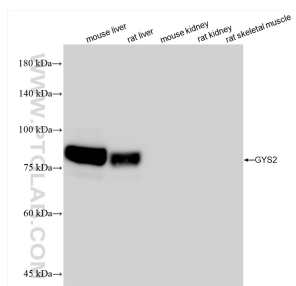
T: 4006900926

E: Proteintech-CN@ptglab.com

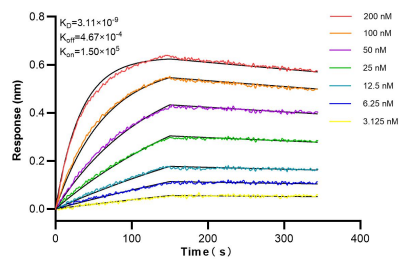
W: ptgcn.com

This product is exclusively available under Proteintech Group brand and is not available to purchase from any other manufacturer.

Selected Validation Data



Various lysates were subjected to SDS PAGE followed by western blot with 85122-4-RR (GYS2 antibody) at dilution of 1:10000 incubated at room temperature for 1.5 hours.



Biolayer interferometry (BLI) kinetic assays of 85122-4-RR against Human GYS2 were performed. The affinity constant is 3.11 nM.