

For Research Use Only

# AKAP1 Recombinant antibody, PBS Only (Detector)

Catalog Number: 85119-2-PBS



## Basic Information

Catalog Number:	85119-2-PBS	GenBank Accession Number:	BC000729	Purification Method:	Protein A purification
Concentration:	1 mg/ml	GeneID (NCBI):	8165	CloneNo.:	242763A5
Source:	Rabbit	UNIPROT ID:	Q92667		
Isotype:	IgG	Full Name:	A kinase (PRKA) anchor protein 1		
Immunogen Catalog Number:	AG8037	Calculated MW:	97 kDa		
		Observed MW:	149 kDa		

## Applications

**Tested Applications:**  
WB, IF/ICC, FC (Intra), Cytometric bead array, Indirect ELISA

**Species Specificity:**  
human

## Background Information

AKAP1 (also termed AKAP149) is a human 149 kDa anchoring protein localized in mitochondria and the endoplasmic reticulum/nuclear envelope (ER-NE) network. It Binds to type I and II regulatory subunits of protein kinase A and anchors them to the cytoplasmic face of the mitochondrial outer membrane. This protein is speculated to be involved in the cAMP-dependent signal transduction pathway and in directing RNA to a specific cellular compartment.

## Storage

**Storage:**  
Store at -80°C.  
**The product is shipped with ice packs. Upon receipt, store it immediately at -80°C**

**Storage Buffer:**  
PBS only

For technical support and original validation data for this product please contact:

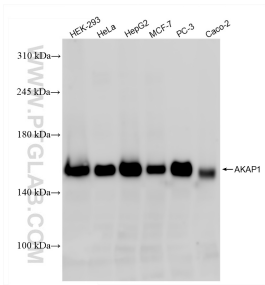
T: 4006900926

E: Proteintech-CN@ptglab.com

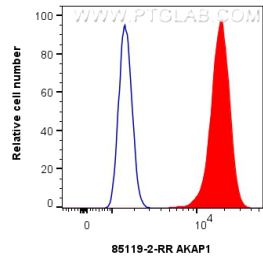
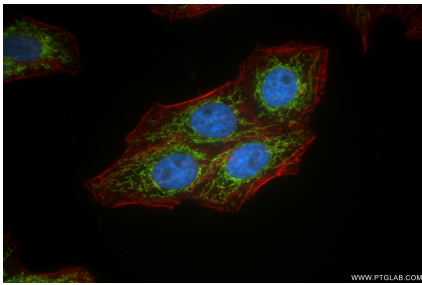
W: ptgcn.com

**This product is exclusively available under Proteintech Group brand and is not available to purchase from any other manufacturer.**

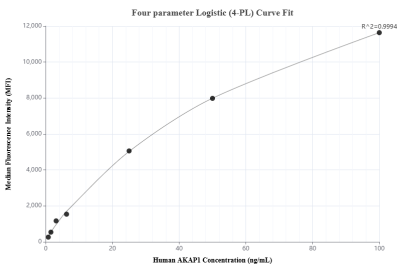
Selected Validation Data



Various lysates were subjected to SDS PAGE followed by western blot with 85119-2-RR (AKAP1 antibody) at dilution of 1:10000 incubated at room temperature for 1.5 hours. This data was developed using the same antibody clone with 85119-2-PBS in a different storage buffer formulation.



1x10<sup>6</sup> HEK-293T cells were intracellularly stained with 0.13 ug AKAP1 Recombinant antibody (85119-2-RR, Clone:242763A5) and CoraLite®488-Conjugated Goat Anti-Rabbit IgG(H+L) (SA00013-2)(red), or 0.13 ug Rabbit IgG Isotype Control RecAb (98136-1-RR, Clone: 240953C9) (blue). Cells were fixed with 4% PFA and permeabilized with Flow Cytometry Perm Buffer (PF00011-C). This data was developed using the same antibody clone with 85119-2-PBS in a different storage buffer



Cytometric bead array standard curve of MP01840-1, AKAP1 Recombinant Matched Antibody Pair, PBS Only. Capture antibody: 85119-3-PBS. Detection antibody: 85119-2-PBS. Standard: Ag8037. Range: 0.781-100 ng/mL.