

For Research Use Only

TPX2 Recombinant antibody, PBS Only (Capture/Detector)

Catalog Number: 85118-3-PBS



Basic Information

Catalog Number:

85118-3-PBS

Concentration:

1 mg/ml

Source:

Rabbit

Isotype:

IgG

Immunogen Catalog Number:

AG2334

GenBank Accession Number:

BC020207

GeneID (NCBI):

22974

UNIPROT ID:

Q9ULW0

Full Name:

TPX2, microtubule-associated,
homolog (Xenopus laevis)

Calculated MW:

747 aa, 86 kDa

Purification Method:

Protein A purification

CloneNo.:

242528F9

Applications

Tested Applications:

Cytometric bead array, Sandwich ELISA, Indirect ELISA,
Sample test

Species Specificity:

human

Background Information

Storage

Storage:

Store at -80°C.

The product is shipped with ice packs. Upon receipt, store it immediately at -80°C

Storage Buffer:

PBS Only

For technical support and original validation data for this product please contact:

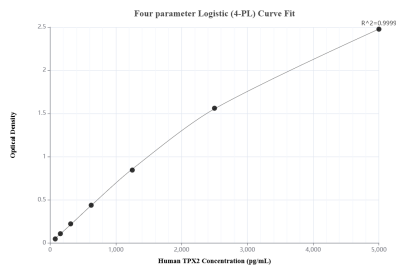
T: 4006900926

E: Proteintech-CN@ptglab.com

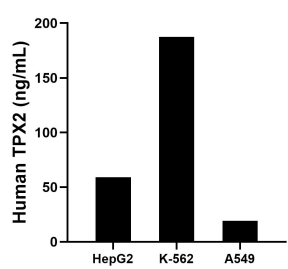
W: ptgcn.com

This product is exclusively available under Proteintech Group brand and is not available to purchase from any other manufacturer.

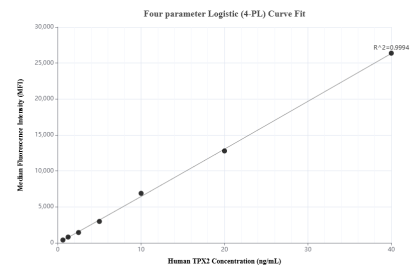
Selected Validation Data



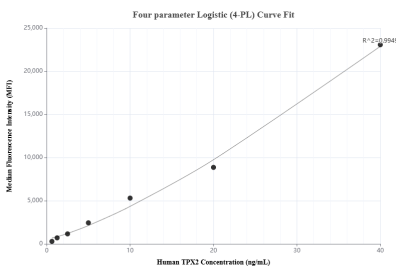
Sandwich ELISA standard curve of MP01821-3, Human TPX2 Recombinant Matched Antibody Pair - PBS only. 85118-3-PBS was coated to a plate as the capture antibody and incubated with serial dilutions of standard Ag2334. 85118-4-PBS was HRP conjugated as the detection antibody. Range: 78.1-5000 pg/mL



The mean TPX2 concentration was determined to be 59.0 ng/mL in HepG2 cell extract based on a 1.0 mg/mL extract load, 187.5 ng/mL in K-562 cell extract based on a 2.5 mg/mL extract load and 19.2 ng/mL in A549 cell extract based on a 1.5 mg/mL extract load.



Cytometric bead array standard curve of MP01821-1, TPX2 Recombinant Matched Antibody Pair, PBS Only. Capture antibody: 85118-2-PBS. Detection antibody: 85118-3-PBS. Standard: Ag2334. Range: 0.625-40 ng/mL



Cytometric bead array standard curve of MP01821-2, TPX2 Recombinant Matched Antibody Pair, PBS Only. Capture antibody: 85118-1-PBS. Detection antibody: 85118-3-PBS. Standard: Ag2334. Range: 0.625-40 ng/mL