

For Research Use Only

# ETS2 Recombinant antibody, PBS Only (Detector)

Catalog Number: 85113-1-PBS



## Basic Information

Catalog Number:

85113-1-PBS

Concentration:

1 mg/ml

Source:

Rabbit

Isotype:

IgG

Immunogen Catalog Number:

AG2929

GenBank Accession Number:

BC017040

GeneID (NCBI):

2114

UNIPROT ID:

P15036

Full Name:

v-ets erythroblastosis virus E26  
oncogene homolog 2 (avian)

Calculated MW:

469 aa, 53 kDa

Purification Method:

Protein A purification

CloneNo.:

242817A10

## Applications

Tested Applications:

Cytometric bead array, Sandwich ELISA, Indirect ELISA,  
Sample test

Species Specificity:

human

## Background Information

### Storage

Storage:

Store at -80°C.

The product is shipped with ice packs. Upon receipt, store it immediately at -80°C

Storage Buffer:

PBS only

For technical support and original validation data for this product please contact:

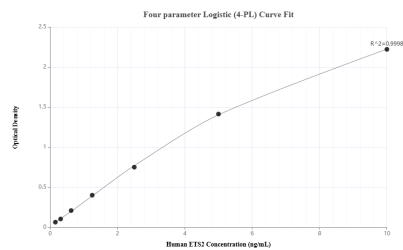
T: 4006900926

E: [Proteintech-CN@ptglab.com](mailto:Proteintech-CN@ptglab.com)

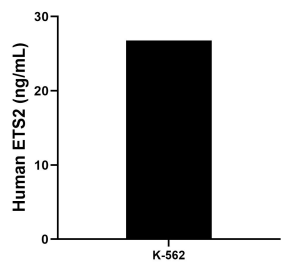
W: [ptgcn.com](http://ptgcn.com)

This product is exclusively available under Proteintech Group brand and is not available to purchase from any other manufacturer.

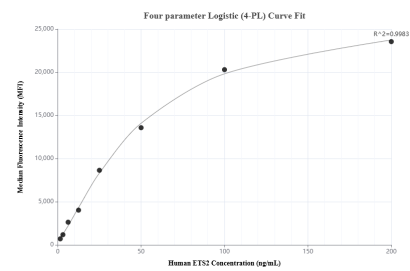
## Selected Validation Data



Sandwich ELISA standard curve of MP01858-3, Human ETS2 Recombinant Matched Antibody Pair - PBS only. 85113-4-PBS was coated to a plate as the capture antibody and incubated with serial dilutions of standard Ag2929. 85113-1-PBS was HRP conjugated as the detection antibody. Range: 0.156-10 ng/mL



The mean ETS2 concentration was determined to be 26.79 ng/mL in K-562 cell extract based on a 2.0 mg/mL extract load.



Cytometric bead array standard curve of MP01858-2, ETS2 Recombinant Matched Antibody Pair, PBS Only. Capture antibody: 85113-3-PBS. Detection antibody: 85113-1-PBS. Standard: Ag2929. Range: 1.563-200 ng/mL