

For Research Use Only

SELL Recombinant antibody, PBS Only (Capture/Detector)

Catalog Number: 85111-1-PBS



Basic Information

Catalog Number:

85111-1-PBS

Size:

1 mg/ml

Source:

Rabbit

Isotype:

IgG

GenBank Accession Number:

NM_000655.5

GeneID (NCBI):

6402

ENSEMBL Gene ID:

ENSG00000188404

UNIPROT ID:

P14151-1

Full Name:

selectin L

Calculated MW:

42 kDa

Purification Method:

Protein A purification

CloneNo.:

242283A4

Applications

Tested Applications:

Cytometric bead array, Sandwich ELISA, Indirect ELISA,
Sample test

Species Specificity:

human

Background Information

Storage

Storage:

Store at -80°C.

The product is shipped with ice packs. Upon receipt, store it immediately at -80°C

Storage Buffer:

PBS Only

For technical support and original validation data for this product please contact:

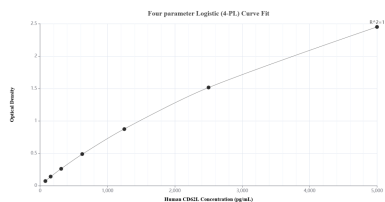
T: 4006900926

E: Proteintech-CN@ptglab.com

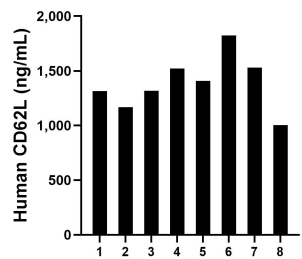
W: ptgcn.com

This product is exclusively available under Proteintech Group brand and is not available to purchase from any other manufacturer.

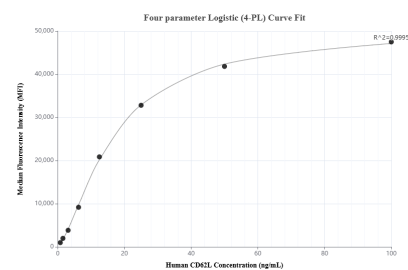
Selected Validation Data



Sandwich ELISA standard curve of MP01864-3, Human CD62L Recombinant Matched Antibody Pair - PBS only. 85111-3-PBS was coated to a plate as the capture antibody and incubated with serial dilutions of standard Eg3006. 85111-1-PBS was HRP conjugated as the detection antibody. Range: 78.1-5000 pg/mL.



Serum of eight individual healthy human donors was measured. The CD62L concentration of detected samples was determined to be 1,385.8 pg/mL with a range of 1,003.9-1,823.7 pg/mL.



Cytometric bead array standard curve of MP01864-2, CD62L Recombinant Matched Antibody Pair, PBS Only. Capture antibody: 85111-1-PBS. Detection antibody: 85111-3-PBS. Standard: Eg3006. Range: 0.781-100 ng/mL.