

For Research Use Only

# SYTL5 Recombinant antibody

Catalog Number: 85108-5-RR



## Basic Information

Catalog Number:

85108-5-RR

Concentration:

1000 µg/ml

Source:

Rabbit

Isotype:

IgG

Immunogen Catalog Number:

AG21698

GenBank Accession Number:

BC131585

GeneID (NCBI):

94122

UNIPROT ID:

Q8TDW5

Full Name:

synaptotagmin-like 5

Calculated MW:

730 aa, 81 kDa

Observed MW:

82 kDa

Purification Method:

Protein A purification

CloneNo.:

242838D12

Recommended Dilutions:

WB 1:2000-1:10000

IF-P 1:200-1:800

## Applications

Tested Applications:

WB, IF-P, ELISA

Species Specificity:

human, rat

Positive Controls:

WB : SK-N-SH cells, U-251 cells

IF-P : rat brain tissue,

## Background Information

SYTL5, also known as SLP5, is a member of the synaptotagmin-like protein (Slp) family. Members of this family are characterized by the presence of an N-terminal Slp homology domain (SHD), which functions as a Rab27-binding domain, and C-terminal tandem C2 domains, putative Ca(2+)-binding motifs. SYTL5 promotes the development and progression of papillary thyroid carcinoma (PTC) by activating the NF-κB signaling pathway (PMID: 36378561).

## Storage

Storage:

Store at -20°C. Stable for one year after shipment.

Storage Buffer:

PBS with 0.02% sodium azide and 50% glycerol pH 7.3.

Aliquoting is unnecessary for -20°C storage

For technical support and original validation data for this product please contact:

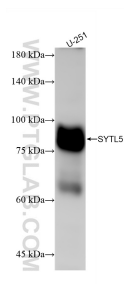
T: 4006900926

E: [Proteintech-CN@ptglab.com](mailto:Proteintech-CN@ptglab.com)

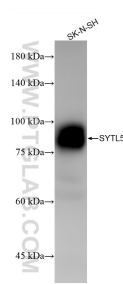
W: [ptgcn.com](http://ptgcn.com)

This product is exclusively available under Proteintech Group brand and is not available to purchase from any other manufacturer.

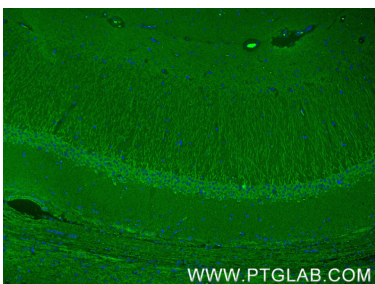
Selected Validation Data



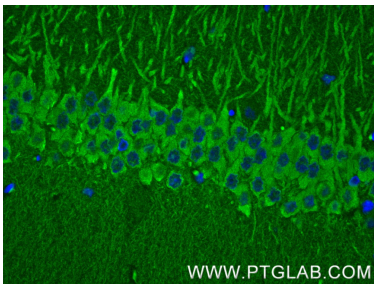
U-251 cells were subjected to SDS PAGE followed by western blot with 85108-5-RR (SYTL5 antibody) at dilution of 1:5000 incubated at room temperature for 1.5 hours.



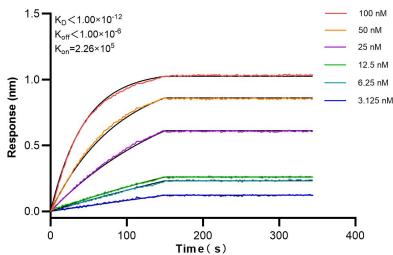
SK-N-SH cells were subjected to SDS PAGE followed by western blot with 85108-5-RR (SYTL5 antibody) at dilution of 1:5000 incubated at room temperature for 1.5 hours.



Immunofluorescent analysis of (4% PFA) fixed paraffin-embedded rat brain tissue using SYTL5 antibody (85108-5-RR, Clone: 242838D12 ) at dilution of 1:400 and CoraLite®488-Conjugated Goat Anti-Rabbit IgG(H+L) (SA00013-2). Heat mediated antigen retrieval with Tris-EDTA buffer (pH 9.0).



Immunofluorescent analysis of (4% PFA) fixed paraffin-embedded rat brain tissue using SYTL5 antibody (85108-5-RR, Clone: 242838D12 ) at dilution of 1:400 and CoraLite®488-Conjugated Goat Anti-Rabbit IgG(H+L) (SA00013-2). Heat mediated antigen retrieval with Tris-EDTA buffer (pH 9.0).



Biolayer interferometry (BLI) kinetic assays of 85108-5-RR against Human SYTL5 were performed. The affinity constant is below 1 pM.