

For Research Use Only

# SYTL5 Recombinant antibody, PBS Only

Catalog Number: 85108-5-PBS



## Basic Information

Catalog Number:	85108-5-PBS	GenBank Accession Number:	BC131585	Purification Method:	Protein A purification
Concentration:	1 mg/ml	GeneID (NCBI):	94122	CloneNo.:	242838D12
Source:	Rabbit	UNIPROT ID:	Q8TDW5		
Isotype:	IgG	Full Name:	synaptotagmin-like 5		
Immunogen Catalog Number:	AG21698	Calculated MW:	730 aa, 81 kDa		
		Observed MW:	82 kDa		

## Applications

Tested Applications:  
WB, IF-P, Indirect ELISA

Species Specificity:  
human, rat

## Background Information

SYTL5, also known as SLP5, is a member of the synaptotagmin-like protein (Slp) family. Members of this family are characterized by the presence of an N-terminal Slp homology domain (SHD), which functions as a Rab27-binding domain, and C-terminal tandem C2 domains, putative Ca(2+)-binding motifs. SYTL5 promotes the development and progression of papillary thyroid carcinoma (PTC) by activating the NF- $\kappa$ B signaling pathway (PMID: 36378561).

## Storage

Storage:  
Store at -80°C.  
**The product is shipped with ice packs. Upon receipt, store it immediately at -80°C**

Storage Buffer:  
PBS Only

For technical support and original validation data for this product please contact:

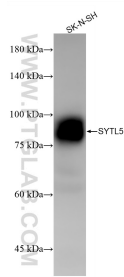
T: 4006900926

E: Proteintech-CN@ptglab.com

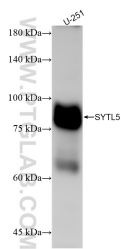
W: ptgcn.com

**This product is exclusively available under Proteintech Group brand and is not available to purchase from any other manufacturer.**

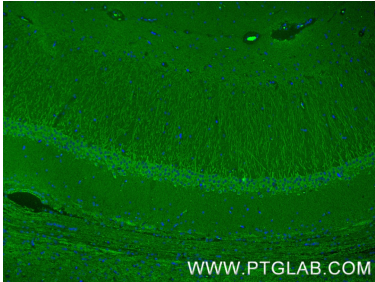
Selected Validation Data



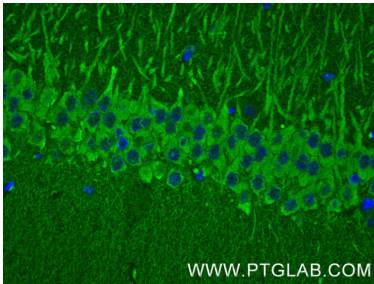
SK-N-SH cells were subjected to SDS PAGE followed by western blot with 85108-5-RR (SYTL5 antibody) at dilution of 1:5000 incubated at room temperature for 1.5 hours. This data was developed using the same antibody clone with 85108-5-PBS in a different storage buffer formulation.



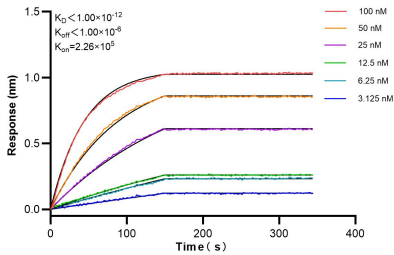
U-251 cells were subjected to SDS PAGE followed by western blot with 85108-5-RR (SYTL5 antibody) at dilution of 1:5000 incubated at room temperature for 1.5 hours. This data was developed using the same antibody clone with 85108-5-PBS in a different storage buffer formulation.



Immunofluorescent analysis of (4% PFA) fixed paraffin-embedded rat brain tissue using SYTL5 antibody (85108-5-RR, Clone: 242838D12 ) at dilution of 1:400 and CoraLite®488-Conjugated Goat Anti-Rabbit IgG(H+L) (SA00013-2). Heat mediated antigen retrieval with Tris-EDTA buffer (pH 9.0). This data was developed using the same antibody clone with 85108-5-PBS in a different storage buffer formulation.



Immunofluorescent analysis of (4% PFA) fixed paraffin-embedded rat brain tissue using SYTL5 antibody (85108-5-RR, Clone: 242838D12 ) at dilution of 1:400 and CoraLite®488-Conjugated Goat Anti-Rabbit IgG(H+L) (SA00013-2). Heat mediated antigen retrieval with Tris-EDTA buffer (pH 9.0). This data was developed using the same antibody clone with 85108-5-PBS in a different storage buffer formulation.



Biolayer interferometry (BLI) kinetic assays of 85108-5-RR against Human SYTL5 were performed. The affinity constant is below 1 pM.