

For Research Use Only

# Caspase 10 Recombinant antibody, PBS Only (Capture)

Catalog Number: 85104-2-PBS



## Basic Information

**Catalog Number:**

85104-2-PBS

**Size:**

1 mg/ml

**Source:**

Rabbit

**Isotype:**

IgG

**GenBank Accession Number:**

BC042844

**GeneID (NCBI):**

843

**UNIPROT ID:**

Q92851

**Full Name:**

caspase 10, apoptosis-related  
cysteine peptidase

**Calculated MW:**

59 kDa

**Purification Method:**

Protein A purification

**CloneNo.:**

242468C3

## Applications

**Tested Applications:**

Sandwich ELISA, Indirect ELISA, Sample test

**Species Specificity:**

human

## Background Information

### Storage

**Storage:**

Store at -80°C.

**The product is shipped with ice packs. Upon receipt, store it immediately at -80°C**

**Storage Buffer:**

PBS Only

For technical support and original validation data for this product please contact:

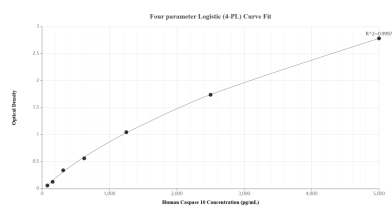
T: 4006900926

E: [Proteintech-CN@ptglab.com](mailto:Proteintech-CN@ptglab.com)

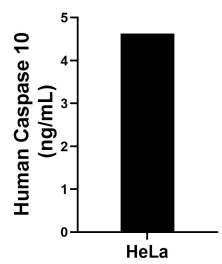
W: [ptgcn.com](http://ptgcn.com)

**This product is exclusively available under Proteintech Group brand and is not available to purchase from any other manufacturer.**

## Selected Validation Data



Sandwich ELISA standard curve of MP01855-1, Human Caspase 10 Recombinant Matched Antibody Pair - PBS only. 85104-2-PBS was coated to a plate as the capture antibody and incubated with serial dilutions of standard SY02408. 85104-1-PBS was HRP conjugated as the detection antibody. Range: 78.1-5000 pg/mL.



The mean Caspase 10 concentration was determined to be 4.6 ng/mL in HeLa cell extract based on a 1.0 mg/mL extract load.