

For Research Use Only

ITPR1-Specific Recombinant antibody, PBS Only

Catalog Number: 85101-1-PBS



Basic Information

Catalog Number:

85101-1-PBS

Concentration:

1 mg/ml

Source:

Rabbit

Isotype:

IgG

GenBank Accession Number:

NM_001099952

GeneID (NCBI):

3708

UNIPROT ID:

Q14643

Full Name:

inositol 1,4,5-trisphosphate receptor,
type 1

Calculated MW:

314 kDa

Observed MW:

290-300 kDa

Purification Method:

Protein A purification

CloneNo.:

242274B10

Applications

Tested Applications:

WB, IHC, Indirect ELISA

Species Specificity:

human, mouse, rat

Background Information

ITPR1, also named as INSP3R1 and IP3R, belongs to the InsP3 receptor family. It is a receptor for inositol 1,4,5-trisphosphate which is a second messenger that mediates the release of intracellular calcium. Defects in ITPR1 are the cause of spinocerebellar ataxia type 15 (SCA15). The antibody has no cross reaction with ITPR2 and ITPR3.

Storage

Storage:

Store at -80°C.

The product is shipped with ice packs. Upon receipt, store it immediately at -80°C

Storage Buffer:

PBS only, pH7.3

For technical support and original validation data for this product please contact:

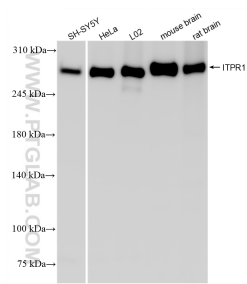
T: 4006900926

E: Proteintech-CN@ptglab.com

W: ptgcn.com

This product is exclusively available under Proteintech Group brand and is not available to purchase from any other manufacturer.

Selected Validation Data



Various lysates were subjected to SDS PAGE followed by western blot with 85101-1-RR (ITPR1-specific antibody) at dilution of 1:10000 incubated at room temperature for 1.5 hours. This data was developed using the same antibody clone with 85101-1-PBS in a different storage buffer formulation.

