

For Research Use Only

# GDF-15 Recombinant antibody, PBS Only

Catalog Number: 85100-1-PBS



## Basic Information

Catalog Number:	GenBank Accession Number:	Purification Method:
85100-1-PBS	BC008962	Protein A purification
Concentration:	GeneID (NCBI):	CloneNo.:
1 mg/ml	9518	242173B11
Source:	UNIPROT ID:	
Rabbit	Q99988	
Isotype:	Full Name:	
IgG	growth differentiation factor 15	
Immunogen Catalog Number:	Calculated MW:	
AG26790	34 kDa	
	Observed MW:	
	34 kDa	

## Applications

Tested Applications:  
WB, IHC, Indirect ELISA

Species Specificity:  
human

## Background Information

associated with hypoxia, inflammation and oxidative stress, it is also released from endothelial cells after stimulation with pro-inflammatory cytokines. GDF 15 has been suggested as a target and biomarker for cardiovascular disease as it plays a cardioprotective role in the adult heart. GDF 15 is highly expressed in the placenta. GDF 15 is known to be involved in human embryo development and necessary for the maintenance of pregnancy. GDF 15 is also produced by adipocytes in response to oxidative stress, a well-known factor associated with preeclampsia.

## Storage

Storage:  
Store at -80°C.

The product is shipped with ice packs. Upon receipt, store it immediately at -80°C

Storage Buffer:  
PBS Only

For technical support and original validation data for this product please contact:

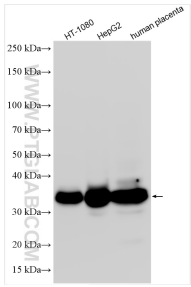
T: 4006900926

E: [Proteintech-CN@ptglab.com](mailto:Proteintech-CN@ptglab.com)

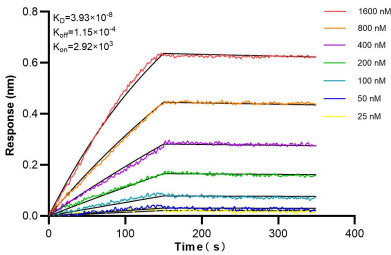
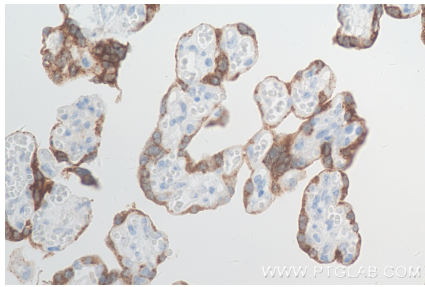
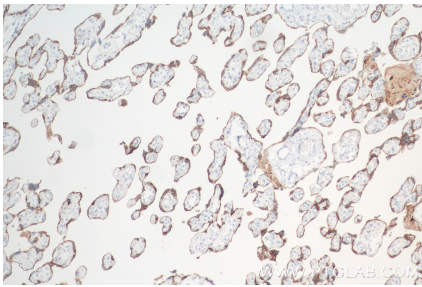
W: [ptgcn.com](http://ptgcn.com)

This product is exclusively available under Proteintech Group brand and is not available to purchase from any other manufacturer.

Selected Validation Data



Various lysates were subjected to SDS PAGE followed by western blot with 85100-1-RR (GDF-15 antibody) at dilution of 1:10000 incubated at room temperature for 1.5 hours. This data was developed using the same antibody clone with 85100-1-PBS in a different storage buffer formulation.



Biolayer interferometry (BLI) kinetic assays of 85100-1-RR against Human GDF-15 were performed. The affinity constant is 39.3 nM.