

For Research Use Only

# Mouse Fetuin A/AHSG Recombinant antibody, PBS Only (Detector)

Catalog Number: 85085-2-PBS



## Basic Information

Catalog Number:

85085-2-PBS

Size:

1 mg/ml

Source:

Rabbit

Isotype:

IgG

GenBank Accession Number:

NM\_013465.2

GeneID (NCBI):

11625

UNIPROT ID:

P29699

Full Name:

alpha-2-HS-glycoprotein

Calculated MW:

37 kDa

Purification Method:

Protein A purification

CloneNo.:

242732E5

## Applications

Tested Applications:

Cytometric bead array, Sandwich ELISA, Indirect ELISA,  
Sample test

Species Specificity:

mouse

## Background Information

### Storage

Storage:

Store at -80°C.

**The product is shipped with ice packs. Upon receipt, store it immediately at -80°C**

Storage Buffer:

PBS Only

For technical support and original validation data for this product please contact:

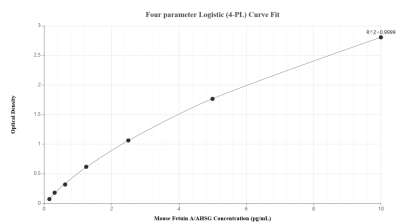
T: 4006900926

E: [Proteintech-CN@ptglab.com](mailto:Proteintech-CN@ptglab.com)

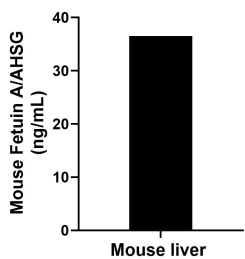
W: [ptgcn.com](http://ptgcn.com)

**This product is exclusively available under Proteintech Group brand and is not available to purchase from any other manufacturer.**

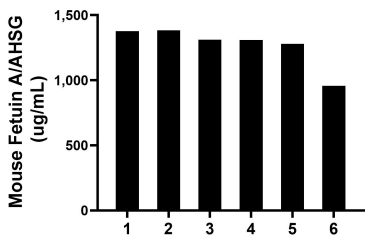
## Selected Validation Data



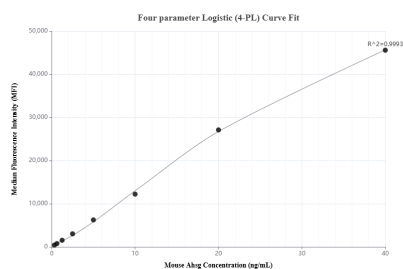
Sandwich ELISA standard curve of MP01802-1, Mouse Fetuin A/AHSG Recombinant Matched Antibody Pair - PBS only. 85085-1-PBS was coated to a plate as the capture antibody and incubated with serial dilutions of standard Eg3151. 85085-2-PBS was HRP conjugated as the detection antibody. Range: 39.1-2500 pg/mL



One mouse liver was cultured for 18 hours in RPMI 1640 supplemented with 10% fetal bovine serum, 50  $\mu$  M  $\beta$ -mercaptoethanol, 2 mM L-glutamine, and 100  $\mu$  g/mL of streptomycin sulfate. An aliquot of the cell culture supernatant was removed, assayed for mouse Fetuin A/AHSG and measured 36.5 ng/mL



Serum of six mice was measured. The Fetuin A/AHSG concentration of detected samples was determined to be 1,270.1 ug/mL with a range of 956.9 -1,383.5 ug/mL



Cytometric bead array standard curve of MP01802-1, MOUSE Ahsg Recombinant Matched Antibody Pair, PBS Only. Capture antibody: 85085-1-PBS. Detection antibody: 85085-2-PBS. Standard: Eg3151. Range: 0.313-40 ng/mL