

CEL Recombinant monoclonal antibody

Catalog Number: 85081-4-RR

Basic Information

Catalog Number:

85081-4-RR

Concentration:

1000 ug/ml

Source:

Rabbit

Isotype:

IgG

Immunogen Catalog Number:

AG5262

GenBank Accession Number:

BC042510

GeneID (NCBI):

1056

UNIPROT ID:

P19835

Full Name:

carboxyl ester lipase (bile salt-stimulated lipase)

Calculated MW:

79 kDa

Observed MW:

79 kDa

Purification Method:

Protein A purification

CloneNo.:

242761B11

Recommended Dilutions:

WB: 1:5000-1:50000

IHC: 1:400-1:1600

Applications

Tested Applications:

WB, IHC, ELISA

Species Specificity:

human

Note-IHC: suggested antigen retrieval with TE buffer pH 9.0; (*) Alternatively, antigen retrieval may be performed with citrate buffer pH 6.0

Positive Controls:

WB: HeLa cells, MCF-7 cells, Raji cells

IHC: human pancreas tissue,

Background Information

Bile salt-activated lipase, previously named cholesterol esterase or bile salt-stimulated (or dependent) lipase, is a 74 kDa lipolytic enzyme capable of hydrolyzing cholesteryl esters, tri-, di-, and mono-acylglycerols, phospholipids, lysophospholipids, and ceramide (PMID:12454261). The same enzyme is present as a major protein in milk and as a minor constituent in liver, activated macrophages, and endothelial cells (PMID:11733511). Defects in CEL are a cause of maturity-onset diabetes of the young type 8 with exocrine dysfunction (MODY8) (PMID:16369531). The full length protein has 11 glycosylation sites. It has 2 isoforms produced by alternative splicing.

Storage

Storage:

Store at -20°C. Stable for one year after shipment.

Storage Buffer:

PBS with 0.02% sodium azide and 50% glycerol, pH7.3

Aliquoting is unnecessary for -20°C storage

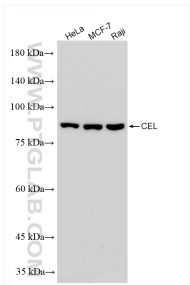
For technical support and original validation data for this product please contact:

T: 4006900926

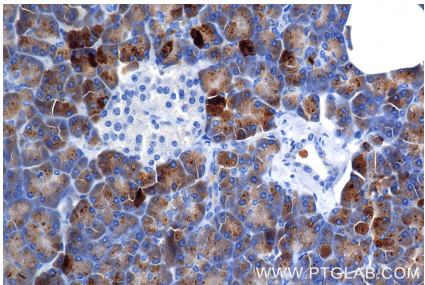
E: Proteintech-CN@ptglab.comW: ptgcn.com

This product is exclusively available under Proteintech Group brand and is not available to purchase from any other manufacturer.

Selected Validation Data

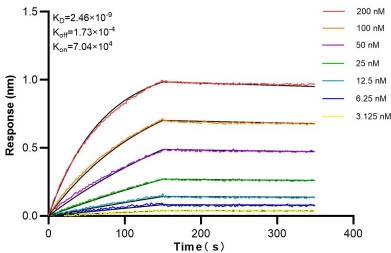


Immunohistochemical analysis of paraffin-embedded human pancreas tissue slide using 85081-4-RR (CEL antibody) at dilution of 1:800 (under 10x lens). Heat mediated antigen retrieval with Tris-EDTA buffer (pH 9.0).



Various lysates were subjected to SDS PAGE followed by western blot with 85081-4-RR (CEL antibody) at dilution of 1:10000 incubated at room temperature for 1.5 hours.

Immunohistochemical analysis of paraffin-embedded human pancreas tissue slide using 85081-4-RR (CEL antibody) at dilution of 1:800 (under 40x lens). Heat mediated antigen retrieval with Tris-EDTA buffer (pH 9.0).



Biolayer interferometry (BLI) kinetic assays of 85081-4-RR against Human CEL were performed. The affinity constant is 2.46 nM.