

For Research Use Only

# SLAM/CD150 Recombinant antibody

Catalog Number: 85073-1-RR



## Basic Information

Catalog Number:

85073-1-RR

Size:

1000 ug/ml

Source:

Rabbit

Isotype:

IgG

GenBank Accession Number:

NM\_013730.4

GeneID (NCBI):

27218

UNIPROT ID:

Q9QUM4-1

Full Name:

signaling lymphocytic activation  
molecule family member 1

Calculated MW:

38 kDa

Observed MW:

70-80 kDa

Purification Method:

Protein A purification

CloneNo.:

242631B1

Recommended Dilutions:

WB 1:2000-1:10000

## Applications

Tested Applications:

WB, ELISA

Species Specificity:

mouse, rat

Positive Controls:

WB : mouse spleen tissue, mouse thymus tissue, rat  
thymus tissue

## Background Information

Signaling lymphocytic activation molecule (SLAM, also known as SLAMF1 or CD150) is a 70-95 kDa transmembrane glycoprotein that belongs to the immunoglobulin gene superfamily. SLAM is constitutively expressed on peripheral blood memory T-cells, T-cell clones, immature thymocytes and a proportion of B-cells, and is rapidly induced on naive T-cells after activation. SLAM is involved in T cell stimulation and cytokine production, and may play an important role in the regulation of immune responses to pathogens.

## Storage

Storage:

Store at -20°C. Stable for one year after shipment.

Storage Buffer:

PBS with 0.02% sodium azide and 50% glycerol pH 7.3.

Aliquoting is unnecessary for -20°C storage

For technical support and original validation data for this product please contact:

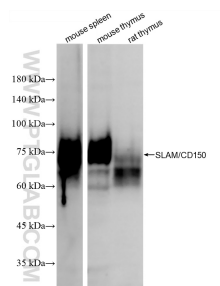
T: 4006900926

E: Proteintech-CN@ptglab.com

W: ptgcn.com

This product is exclusively available under Proteintech Group brand and is not available to purchase from any other manufacturer.

## Selected Validation Data



Various lysates were subjected to SDS PAGE followed by western blot with 85073-1-RR (Slamf1 antibody) at dilution of 1:5000 incubated at room temperature for 1.5 hours.