

For Research Use Only

Mouse SLAM/CD150 Recombinant antibody, PBS Only (Capture)

Catalog Number: 85073-1-PBS



Basic Information

Catalog Number:

85073-1-PBS

Size:

1 mg/ml

Source:

Rabbit

Isotype:

IgG

GenBank Accession Number:

NM_013730.4

GeneID (NCBI):

27218

UNIPROT ID:

Q9QUM4-1

Full Name:

signaling lymphocytic activation molecule family member 1

Calculated MW:

38 kDa

Observed MW:

70-80 kDa

Purification Method:

Protein A purification

CloneNo.:

242631B1

Applications

Tested Applications:

WB, Cytometric bead array, Indirect ELISA

Species Specificity:

mouse, rat

Background Information

Signaling lymphocytic activation molecule (SLAM, also known as SLAMF1 or CD150) is a 70-95 kDa transmembrane glycoprotein that belongs to the immunoglobulin gene superfamily. SLAM is constitutively expressed on peripheral blood memory T-cells, T-cell clones, immature thymocytes and a proportion of B-cells, and is rapidly induced on naive T-cells after activation. SLAM is involved in T cell stimulation and cytokine production, and may play an important role in the regulation of immune responses to pathogens.

Storage

Storage:

Store at -80°C.

The product is shipped with ice packs. Upon receipt, store it immediately at -80°C

Storage Buffer:

PBS Only

For technical support and original validation data for this product please contact:

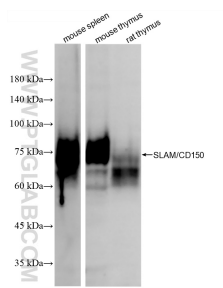
T: 4006900926

E: Proteintech-CN@ptglab.com

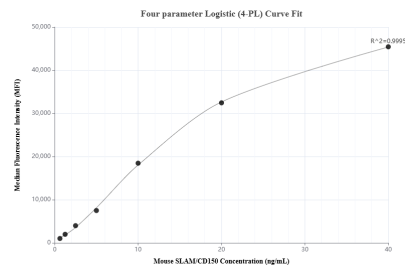
W: ptgcn.com

This product is exclusively available under Proteintech Group brand and is not available to purchase from any other manufacturer.

Selected Validation Data



Various lysates were subjected to SDS PAGE followed by western blot with 85073-1-RR (Slamf1 antibody) at dilution of 1:5000 incubated at room temperature for 1.5 hours. This data was developed using the same antibody clone with 85073-1-PBS in a different storage buffer formulation.



Cytometric bead array standard curve of MP01792-1, MOUSE SLAM/CD150 Recombinant Matched Antibody Pair, PBS Only. Capture antibody: 85073-1-PBS. Detection antibody: 85073-2-PBS. Standard: Eg2787. Range: 0.625-40 ng/mL.