

For Research Use Only

Mouse Il1r2 Recombinant antibody, PBS Only (Capture)

Catalog Number: 85071-2-PBS



Basic Information

Catalog Number:

85071-2-PBS

Concentration:

1 mg/ml

Source:

Rabbit

Isotype:

IgG

Immunogen Catalog Number:

EG2956

GenBank Accession Number:

NM_010555.4

GeneID (NCBI):

16178

UNIPROT ID:

P27931

Full Name:

interleukin 1 receptor, type II

Calculated MW:

46 kDa

Purification Method:

Protein A purification

CloneNo.:

242602C2

Applications

Tested Applications:

Cytometric bead array, Sandwich ELISA, Indirect ELISA, Sample test

Species Specificity:

mouse

Background Information

Storage

Storage:

Store at -80°C.

The product is shipped with ice packs. Upon receipt, store it immediately at -80°C

Storage Buffer:

PBS only, pH7.3

For technical support and original validation data for this product please contact:

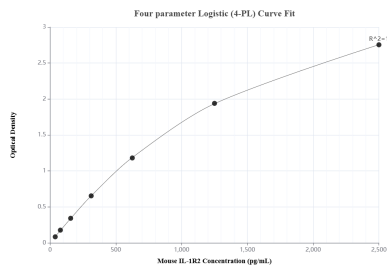
T: 4006900926

E: Proteintech-CN@ptglab.com

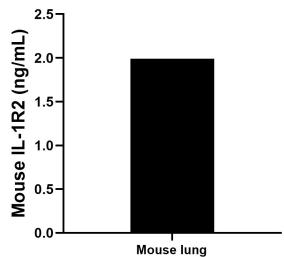
W: ptgcn.com

This product is exclusively available under Proteintech Group brand and is not available to purchase from any other manufacturer.

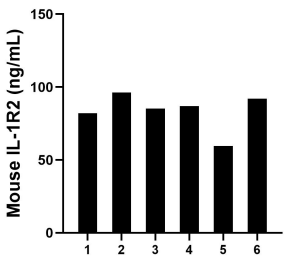
Selected Validation Data



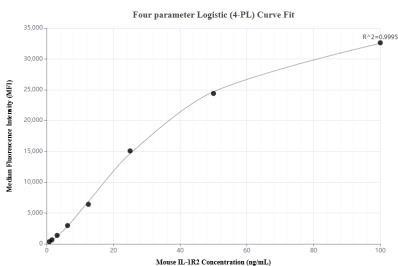
Sandwich ELISA standard curve of MP01814-3, Mouse IL-1R2 Recombinant Matched Antibody Pair - PBS only. 85071-2-PBS was coated to a plate as the capture antibody and incubated with serial dilutions of standard Eg2956. 85071-4-PBS was HRP conjugated as the detection antibody. Range: 39.1-2500 pg/mL



The mean IL-1R2 concentration was determined to be 2.0 ng/mL in mouse lung tissue extract based on a 5.3 mg/mL extract load.



Serum of six mice was measured. The IL-1R2 concentration of detected samples was determined to be 83.6 ng/mL with a range of 59.6-96.2 ng/mL



Cytometric bead array standard curve of MP01814-1, MOUSE IL-1R2 Recombinant Matched Antibody Pair, PBS Only. Capture antibody: 85071-2-PBS. Detection antibody: 85071-3-PBS. Standard: Eg2956. Range: 0.781-100 ng/mL