

For Research Use Only

# MRPL12 Recombinant antibody, PBS Only

Catalog Number: 85070-5-PBS



## Basic Information

Catalog Number:

85070-5-PBS

Concentration:

1000 µg/ml

Source:

Rabbit

Isotype:

IgG

Immunogen Catalog Number:

AG6504

GenBank Accession Number:

BC002344

GeneID (NCBI):

6182

UNIPROT ID:

P52815

Full Name:

mitochondrial ribosomal protein L12

Calculated MW:

21 kDa

Observed MW:

21 kDa

Purification Method:

Protein A purification

CloneNo.:

242622D12

## Applications

Tested Applications:

WB, IF/ICC, Indirect ELISA

Species Specificity:

human, rat

## Background Information

Mammalian MRPL12 was the first mitochondrial ribosomal protein to be characterized, and is encoded by a nuclear gene. The protein forms a homodimer, localizes predominantly to mitochondria and binds to the large mitochondrial ribosomal subunit [PMID:862670]. It is required for CycD/Cdk4-induced cell growth. In addition, forming a ribosomal stalk with MRPL7, MRPL12 is required for the recruitment of translation elongation factors Tu and G to the large ribosomal subunit [PMID:12370014]. It also a part of a novel regulatory mechanism that coordinates mitochondrial transcription with translation and/or ribosome biogenesis during human mitochondrial gene expression.

## Storage

Storage:

Store at -80°C.

**The product is shipped with ice packs. Upon receipt, store it immediately at -80°C**

Storage Buffer:

PBS only

For technical support and original validation data for this product please contact:

T: 4006900926

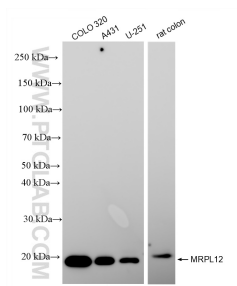
E: Proteintech-CN@ptglab.com

W: ptgcn.com

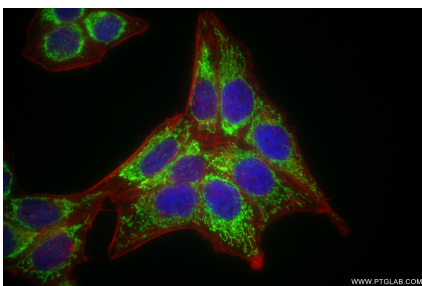
**This product is exclusively available under Proteintech Group brand and is not available to purchase from any other manufacturer.**



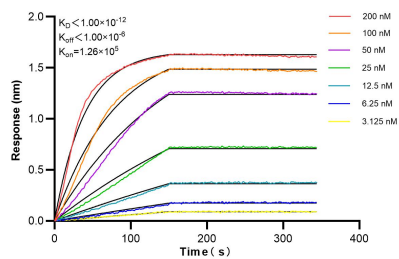
## Selected Validation Data



Various lysates were subjected to SDS PAGE followed by western blot with 85070-5-RR (MRPL12 antibody) at dilution of 1:5000 incubated at room temperature for 1.5 hours. This data was developed using the same antibody clone with 85070-5-PBS in a different storage buffer formulation.



Immunofluorescent analysis of (4% PFA) fixed HepG2 cells using MRPL12 antibody (85070-5-RR, Clone: 242622D12) at dilution of 1:1000 and CoraLite® 488-Conjugated Goat Anti-Rabbit IgG(H+L) (SA00013-2), CL594-Phalloidin (red). This data was developed using the same antibody clone with 85070-5-PBS in a different storage buffer formulation.



Biolayer interferometry (BLI) kinetic assays of 85070-5-RR against Human MRPL12 were performed. The affinity constant is below 1 pM.