

For Research Use Only

SIGMAR1 Recombinant antibody, PBS Only (Detector)

Catalog Number: 85064-1-PBS



Basic Information

Catalog Number: 85064-1-PBS	GenBank Accession Number: BC004899	Purification Method: Protein A purification
Concentration: 1 mg/ml	GeneID (NCBI): 10280	CloneNo.: 242621C6
Source: Rabbit	UNIPROT ID: Q99720	
Isotype: IgG	Full Name: sigma non-opioid intracellular receptor 1	
Immunogen Catalog Number: AG7351	Calculated MW: 25 kDa	
	Observed MW: 25 kDa	

Applications

Tested Applications:
WB, IHC, Cytometric bead array, Indirect ELISA

Species Specificity:
human, mouse, rat

Background Information

SIGMAR1, also named as OPRS1, SRBP, SIG-1R and AAG8, belongs to the ERG2 family. It is an endoplasmic reticulum chaperone that binds a wide variety of ligands, including neurosteroids, psychostimulants, and dextrobenzomorphans. SIGMAR1 is ubiquitously expressed, and is enriched in motor neurons of the brain and spinal cord. It plays a role in calcium signaling through modulation together with ANK2 of the ITP3R-dependent calcium efflux at the endoplasmic reticulum. SIGMAR1 plays a role in several other cell functions including proliferation, survival and death. SDS-PAGE and Western blot analysis showed that SIGMAR1 has an apparent molecular mass of 25 kDa. SIGMAR1 has 5 isoforms with MW 21-27kDa and 12kDa.

Storage

Storage:
Store at -80°C.
The product is shipped with ice packs. Upon receipt, store it immediately at -80°C

Storage Buffer:
PBS only, pH7.3

For technical support and original validation data for this product please contact:

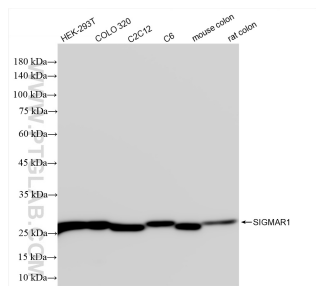
T: 4006900926

E: Proteintech-CN@ptglab.com

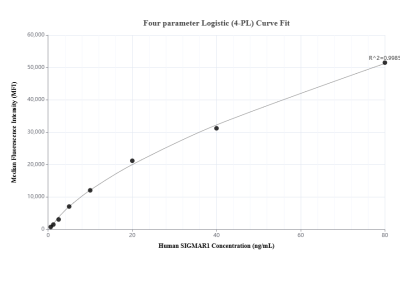
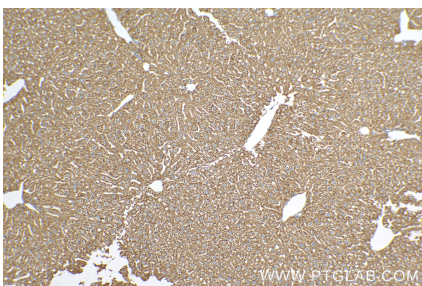
W: ptgcn.com

This product is exclusively available under Proteintech Group brand and is not available to purchase from any other manufacturer.

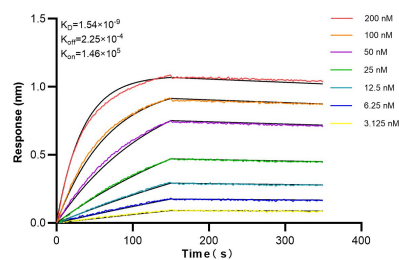
Selected Validation Data



Various lysates were subjected to SDS PAGE followed by western blot with 85064-1-RR (SIGMAR1 antibody) at dilution of 1:10000 incubated at room temperature for 1.5 hours. This data was developed using the same antibody clone with 85064-1-PBS in a different storage buffer formulation.



Cytometric bead array standard curve of MP01809-1, SIGMAR1 Recombinant Matched Antibody Pair, PBS Only. Capture antibody: 85064-2-PBS. Detection antibody: 85064-1-PBS. Standard: Ag7351. Range: 0.625-80 ng/mL.



Biolayer interferometry (BLI) kinetic assays of 85064-1-RR against Human SIGMAR1 were performed. The affinity constant is 1.54 nM.