

For Research Use Only

GAT1 Recombinant antibody, PBS Only (Capture)

Catalog Number: 85060-2-PBS



Basic Information

Catalog Number:

85060-2-PBS

Concentration:

1 mg/ml

Source:

Rabbit

Isotype:

IgG

Immunogen Catalog Number:

AG29712

GenBank Accession Number:

BC033904

GeneID (NCBI):

6529

UNIPROT ID:

P30531

Full Name:

solute carrier family 6
(neurotransmitter transporter, GABA),
member 1

Calculated MW:

67 kDa

Observed MW:

67 kDa

Purification Method:

Protein A purification

CloneNo.:

242637D11

Applications

Tested Applications:

WB, Cytometric bead array, Indirect ELISA

Species Specificity:

human, rat

Background Information

Storage

Storage:

Store at -80°C.

The product is shipped with ice packs. Upon receipt, store it immediately at -80°C

Storage Buffer:

PBS Only

For technical support and original validation data for this product please contact:

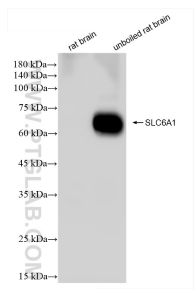
T: 4006900926

E: Proteintech-CN@ptglab.com

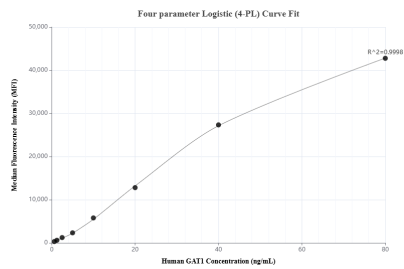
W: ptgcn.com

This product is exclusively available under Proteintech Group brand and is not available to purchase from any other manufacturer.

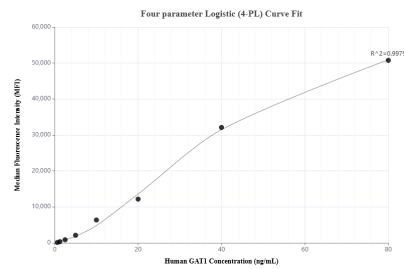
Selected Validation Data



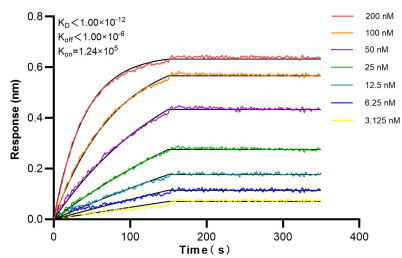
Various lysates were subjected to SDS PAGE followed by western blot with 85060-2-RR (SLC6A1 antibody) at dilution of 1:10000 incubated at room temperature for 1.5 hours. This data was developed using the same antibody clone with 85060-2-PBS in a different storage buffer formulation.



Cytometric bead array standard curve of MP01787-2, GAT1 Recombinant Matched Antibody Pair, PBS Only. Capture antibody: 85060-2-PBS. Detection antibody: 85060-1-PBS. Standard: Ag29712. Range: 0.625-80 ng/mL.



Cytometric bead array standard curve of MP01787-1, GAT1 Recombinant Matched Antibody Pair, PBS Only. Capture antibody: 85060-2-PBS. Detection antibody: 85060-3-PBS. Standard: Ag29712. Range: 0.625-80 ng/mL.



Bioluminescence resonance energy transfer (BLI) kinetic assays of 85060-2-RR against Human GAT1 were performed. The affinity constant is below 1 pM.