

For Research Use Only

RGS12 Recombinant antibody, PBS Only (Capture)

Catalog Number: 85057-3-PBS



Basic Information

Catalog Number:

85057-3-PBS

Concentration:

1 mg/ml

Source:

Rabbit

Isotype:

IgG

Immunogen Catalog Number:

AG30731

GenBank Accession Number:

NM_198229

GeneID (NCBI):

6002

UNIPROT ID:

O14924

Full Name:

regulator of G-protein signaling 12

Calculated MW:

156 kDa

Purification Method:

Protein A purification

CloneNo.:

242530G4

Applications

Tested Applications:

Cytometric bead array, Sandwich ELISA, Indirect ELISA,
Sample test

Species Specificity:

human

Background Information

Storage

Storage:

Store at -80°C.

The product is shipped with ice packs. Upon receipt, store it immediately at -80°C

Storage Buffer:

PBS Only

For technical support and original validation data for this product please contact:

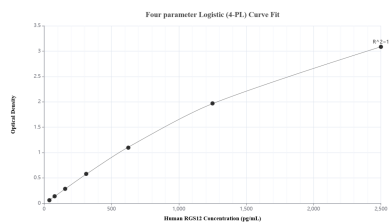
T: 4006900926

E: Proteintech-CN@ptglab.com

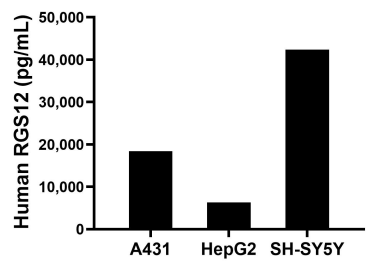
W: ptgcn.com

This product is exclusively available under Proteintech Group brand and is not available to purchase from any other manufacturer.

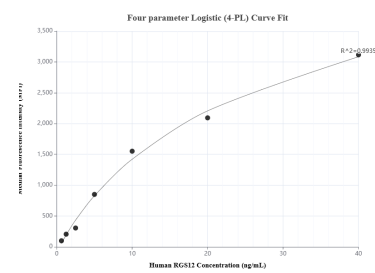
Selected Validation Data



Sandwich ELISA standard curve of MP01790-2, Human RGS12 Recombinant Matched Antibody Pair - PBS only. 85057-3-PBS was coated to a plate as the capture antibody and incubated with serial dilutions of standard Ag30731. 85057-2-PBS was HRP conjugated as the detection antibody. Range: 39.1-2500 pg/mL



The mean RGS12 concentration was determined to be 18,450.2 pg/mL in A431 cell extract based on a 1.3 mg/mL extract load, 6,327.2 pg/mL in HepG2 cell extract based on a 1.0 mg/mL extract load and 42,390.5 pg/mL in SH-SY5Y cell extract based on a 3.2 mg/mL extract load.



Cytometric bead array standard curve of MP01790-2, RGS12 Recombinant Matched Antibody Pair, PBS Only. Capture antibody: 85057-3-PBS. Detection antibody: 85057-2-PBS. Standard: Ag30731. Range: 0.625-40 ng/mL