

For Research Use Only

# ADSS Recombinant antibody, PBS Only (Detector)

Catalog Number: 85056-3-PBS



## Basic Information

Catalog Number:

85056-3-PBS

Concentration:

1 mg/ml

Source:

Rabbit

Isotype:

IgG

Immunogen Catalog Number:

AG9298

GenBank Accession Number:

BC012356

GeneID (NCBI):

159

UNIPROT ID:

P30520

Full Name:

adenylosuccinate synthase

Calculated MW:

456 aa, 50 kDa

Observed MW:

45 kDa

Purification Method:

Protein A purification

CloneNo.:

242492F12

## Applications

Tested Applications:

WB, Cytometric bead array, Indirect ELISA

Species Specificity:

human, mouse, rat

## Background Information

### Storage

Storage:

Store at -80°C.

The product is shipped with ice packs. Upon receipt, store it immediately at -80°C

Storage Buffer:

PBS Only

For technical support and original validation data for this product please contact:

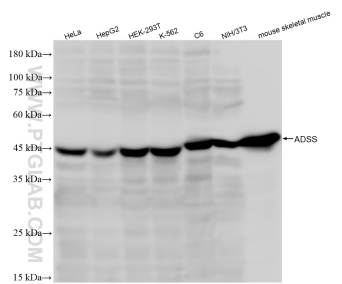
T: 4006900926

E: [Proteintech-CN@ptglab.com](mailto:Proteintech-CN@ptglab.com)

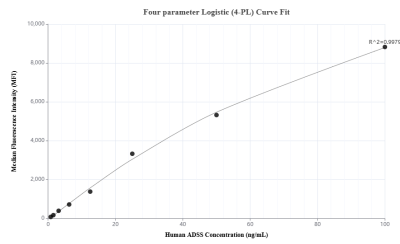
W: [ptgcn.com](http://ptgcn.com)

This product is exclusively available under Proteintech Group brand and is not available to purchase from any other manufacturer.

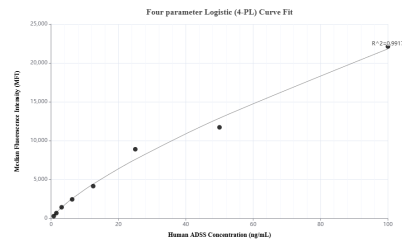
## Selected Validation Data



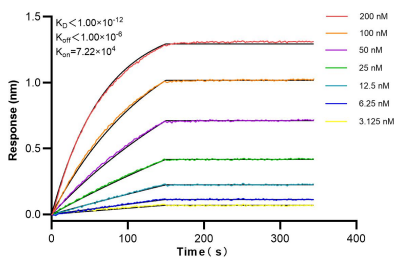
Various lysates were subjected to SDS PAGE followed by western blot with 85056-3-RR (ADSS antibody) at dilution of 1:10000 incubated at room temperature for 1.5 hours. This data was developed using the same antibody clone with 85056-3-PBS in a different storage buffer formulation.



Cytometric bead array standard curve of MP01793-2, ADSS Recombinant Matched Antibody Pair, PBS Only. Capture antibody: 85056-2-PBS. Detection antibody: 85056-3-PBS. Standard: Ag9298. Range: 0.781-100 ng/mL.



Cytometric bead array standard curve of MP01793-1, ADSS Recombinant Matched Antibody Pair, PBS Only. Capture antibody: 85056-1-PBS. Detection antibody: 85056-3-PBS. Standard: Ag9298. Range: 0.781-100 ng/mL.



Biolayer interferometry (BLI) kinetic assays of 85056-3-RR against Human ADSS were performed. The affinity constant is below 1 pM.