

For Research Use Only

# SP3 Recombinant antibody, PBS Only (Capture)

Catalog Number: 85050-2-PBS



## Basic Information

Catalog Number:

85050-2-PBS

Concentration:

1 mg/ml

Source:

Rabbit

Isotype:

IgG

Immunogen Catalog Number:

AG25082

GenBank Accession Number:

BC126414

GeneID (NCBI):

6670

UNIPROT ID:

Q02447

Full Name:

Sp3 transcription factor

Calculated MW:

781 aa, 82 kDa

Purification Method:

Protein A purification

CloneNo.:

242556C7

## Applications

Tested Applications:

Cytometric bead array, Sandwich ELISA, Indirect ELISA,  
Sample test

Species Specificity:

human

## Background Information

### Storage

Storage:

Store at -80°C.

**The product is shipped with ice packs. Upon receipt, store it immediately at -80°C**

Storage Buffer:

PBS Only

For technical support and original validation data for this product please contact:

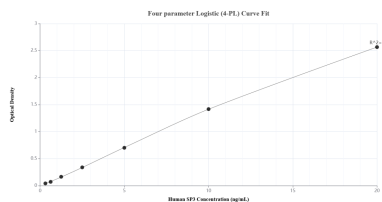
T: 4006900926

E: [Proteintech-CN@ptglab.com](mailto:Proteintech-CN@ptglab.com)

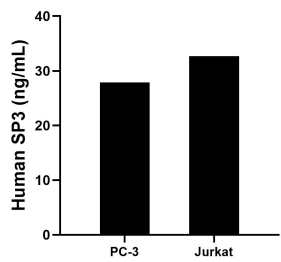
W: [ptgcn.com](http://ptgcn.com)

**This product is exclusively available under Proteintech Group brand and is not available to purchase from any other manufacturer.**

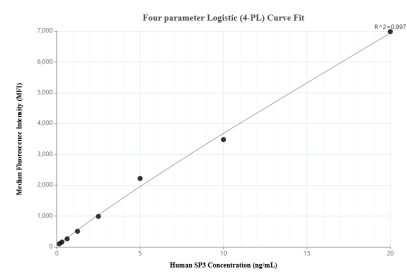
## Selected Validation Data



Sandwich ELISA standard curve of MP01797-3, Human SP3 Recombinant Matched Antibody Pair - PBS only. 85050-2-PBS was coated to a plate as the capture antibody and incubated with serial dilutions of standard Ag25082. 85050-4-PBS was HRP conjugated as the detection antibody. Range: 0.313-20 ng/mL.



The mean SP3 concentration was determined to be 27.89 ng/mL in PC-3 cell extract based on a 2.50 mg/mL extract load and 32.69 ng/mL in Jurkat cell extract based on a 2.00 mg/mL extract load.



Cytometric bead array standard curve of MP01797-2, SP3 Recombinant Matched Antibody Pair, PBS Only. Capture antibody: 85050-2-PBS. Detection antibody: 85050-3-PBS. Standard: Ag25082. Range: 0.156-20 ng/mL.