

For Research Use Only

SP3 Recombinant antibody, PBS Only (Capture)

Catalog Number: 85050-1-PBS



Basic Information

Catalog Number:	GenBank Accession Number:	Purification Method:
85050-1-PBS	BC126414	Protein A purification
Concentration:	GeneID (NCBI):	CloneNo.:
1 mg/ml	6670	242556A2
Source:	UNIPROT ID:	
Rabbit	Q02447	
Isotype:	Full Name:	
IgG	Sp3 transcription factor	
Immunogen Catalog Number:	Calculated MW:	
AG25082	781 aa, 82 kDa	
	Observed MW:	
	70 kDa, 115 kDa	

Applications

Tested Applications:
WB, IF/ICC, Cytometric bead array, Indirect ELISA

Species Specificity:
human, mouse, rat

Background Information

SP3, also named as transcription factor Sp3, is a 781 amino acid protein, which contains 3 C2H2-type zinc fingers and belongs to the Sp1 C2H2-type zinc-finger protein family. SP3 localizes to the nuclear periphery and in nuclear dots when sumoylated. Some localization in PML nuclear bodies. SP3 is acetylated by histone acetyltransferase p300, deacetylated by HDACs and sumoylated on all isoforms. Sumoylated on 2 sites in longer isoforms with Lys-551 being the major site. Sumoylation at this site promotes nuclear localization to the nuclear periphery, nuclear dots and PML nuclear bodies. Sumoylation on Lys-551 represses the transactivation activity, except for the largest isoform, L-Sp3, which has little effect on transactivation. Alternate sumoylation and acetylation at Lys-551 also control transcriptional activity. There exists two modified isoform and molecular weight of those are 70 kDa and 115 kDa.

Storage

Storage:
Store at -80°C.
The product is shipped with ice packs. Upon receipt, store it immediately at -80°C

Storage Buffer:
PBS Only

For technical support and original validation data for this product please contact:

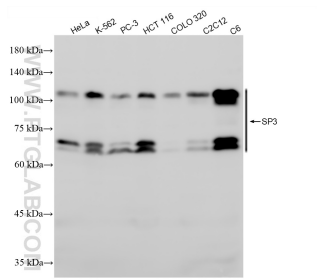
T: 4006900926

E: Proteintech-CN@ptglab.com

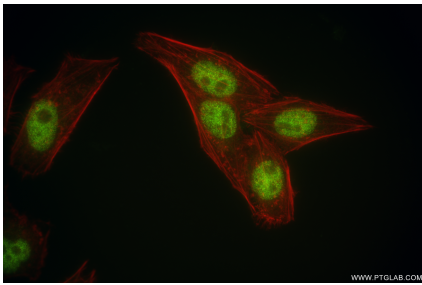
W: ptgcn.com

This product is exclusively available under Proteintech Group brand and is not available to purchase from any other manufacturer.

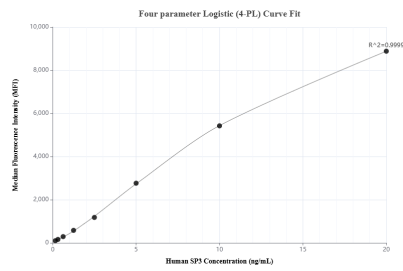
Selected Validation Data



Various lysates were subjected to SDS PAGE followed by western blot with 85050-1-RR (SP3 antibody) at dilution of 1:5000 incubated at room temperature for 1.5 hours. This data was developed using the same antibody clone with 85050-1-PBS in a different storage buffer formulation.



Immunofluorescent analysis of (4% PFA) fixed HepG2 cells using SP3 antibody (85050-1-RR, Clone: 242556A2) at dilution of 1:500 and CoraLite® 488-Conjugated Goat Anti-Rabbit IgG(H+L) (SA00013-2), CL594-Phalloidin (red). This data was developed using the same antibody clone with 85050-1-PBS in a different storage buffer formulation.



Cytometric bead array standard curve of MP01797-1, SP3 Recombinant Matched Antibody Pair, PBS Only. Capture antibody: 85050-1-PBS. Detection antibody: 85050-3-PBS. Standard: Ag25082. Range: 0.156-20 ng/mL.