

For Research Use Only

PRPH2 Recombinant antibody, PBS Only

Catalog Number: 85043-1-PBS



Basic Information

Catalog Number:

85043-1-PBS

Concentration:

1 mg/ml

Source:

Rabbit

Isotype:

IgG

Immunogen Catalog Number:

AG12555

GenBank Accession Number:

BC074720

GeneID (NCBI):

5961

UNIPROT ID:

P23942

Full Name:

peripherin 2 (retinal degeneration, slow)

Calculated MW:

346 aa, 39 kDa

Observed MW:

30-40 kDa

Purification Method:

Protein A purification

CloneNo.:

242170F4

Applications

Tested Applications:

WB, IHC, IF-P, Indirect ELISA

Species Specificity:

human, mouse, rat

Background Information

Peripherin-2 (PRPH2), also known as retinal degeneration slow protein (RDS), is a photoreceptor-specific tetraspanin protein implicated in outer segment disk morphogenesis. It may function as an adhesion molecule involved in the stabilization and compaction of outer segment disks or in the maintenance of the curvature of the rim. Mutations in peripherin-2 are responsible for various retinal degenerative diseases including autosomal dominant retinitis pigmentosa (ADRP).

Storage

Storage:

Store at -80°C.

The product is shipped with ice packs. Upon receipt, store it immediately at -80°C

Storage Buffer:

PBS only, pH7.3

For technical support and original validation data for this product please contact:

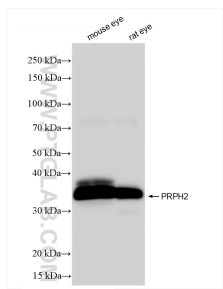
T: 4006900926

E: Proteintech-CN@ptglab.com

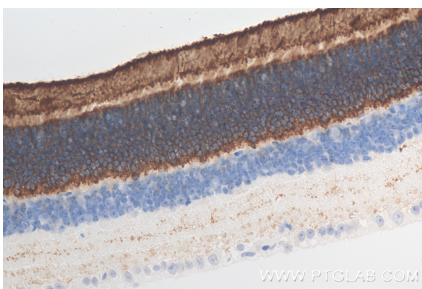
W: ptgcn.com

This product is exclusively available under Proteintech Group brand and is not available to purchase from any other manufacturer.

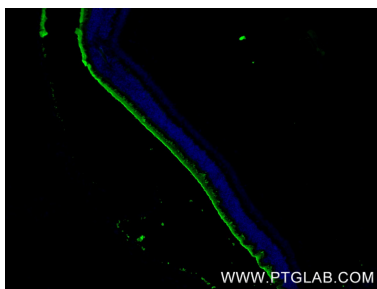
Selected Validation Data



Various lysates were subjected to SDS PAGE followed by western blot with 85043-1-RR (PRPH2 antibody) at dilution of 1:12000 incubated at room temperature for 1.5 hours. This data was developed using the same antibody clone with 85043-1-PBS in a different storage buffer formulation.



Immunohistochemical analysis of paraffin-embedded mouse eye tissue slide using 85043-1-RR (PRPH2 antibody) at dilution of 1:400 (under 40x lens). Heat mediated antigen retrieval with Tris-EDTA buffer (pH 9.0). This data was developed using the same antibody clone with 85043-1-PBS in a different storage buffer formulation.



Immunofluorescent analysis of (4% PFA) fixed paraffin-embedded mouse eye tissue using PRPH2 antibody (85043-1-RR, Clone: 242170F4) at dilution of 1:800 and CoraLite@488-Conjugated Goat Anti-Rabbit IgG(H+L) (SA00013-2). Heat mediated antigen retrieval with Tris-EDTA buffer (pH 9.0). This data was developed using the same antibody clone with 85043-1-PBS in a different storage buffer formulation.