

For Research Use Only

# RPS4X Recombinant antibody, PBS Only (Detector)

Catalog Number: 85040-2-PBS



## Basic Information

Catalog Number:

85040-2-PBS

Concentration:

1 mg/ml

Source:

Rabbit

Isotype:

IgG

Immunogen Catalog Number:

AG6513

GenBank Accession Number:

BC000472

GeneID (NCBI):

6191

UNIPROT ID:

P62701

Full Name:

ribosomal protein S4, X-linked

Calculated MW:

263 aa, 30 kDa

Purification Method:

Protein A purification

CloneNo.:

242697F1

## Applications

Tested Applications:

Cytometric bead array, Sandwich ELISA, Indirect ELISA,  
Sample test

Species Specificity:

human

## Background Information

### Storage

Storage:

Store at -80°C.

The product is shipped with ice packs. Upon receipt, store it immediately at -80°C

Storage Buffer:

PBS Only

For technical support and original validation data for this product please contact:

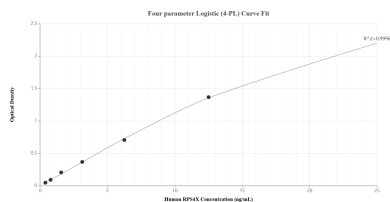
T: 4006900926

E: [Proteintech-CN@ptglab.com](mailto:Proteintech-CN@ptglab.com)

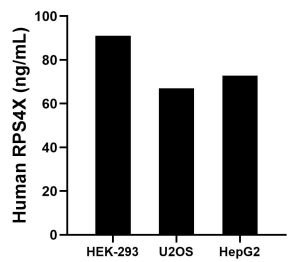
W: [ptgcn.com](http://ptgcn.com)

This product is exclusively available under Proteintech Group brand and is not available to purchase from any other manufacturer.

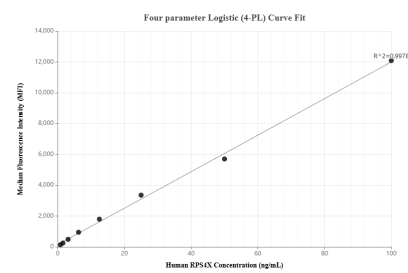
## Selected Validation Data



Sandwich ELISA standard curve of MP01754-3, Human RPS4X Recombinant Matched Antibody Pair - PBS only. 85040-4-PBS was coated to a plate as the capture antibody and incubated with serial dilutions of standard Ag6513. 85040-2-PBS was HRP conjugated as the detection antibody. Range: 0.391-25 ng/mL



The mean RPS4X concentration was determined to be 91.01 ng/mL in HEK-293 cell extract based on a 2.70 mg/mL extract load, 66.99 ng/mL in U2OS cell extract based on a 1.40 mg/mL extract load and 72.80 ng/mL in HepG2 cell extract based on a 2.30 mg/mL extract load.



Cytometric bead array standard curve of MP01754-1, RPS4X Recombinant Matched Antibody Pair, PBS Only. Capture antibody: 85040-1-PBS. Detection antibody: 85040-2-PBS. Standard: Ag6513. Range: 0.781-100 ng/mL