

For Research Use Only

SEC22B Recombinant antibody

Catalog Number: 85037-5-RR



Basic Information

Catalog Number:

85037-5-RR

Concentration:

1000 ug/ml

Source:

Rabbit

Isotype:

IgG

Immunogen Catalog Number:

AG12981

GenBank Accession Number:

BC001364

GeneID (NCBI):

9554

UNIPROT ID:

O75396

Full Name:

SEC22 vesicle trafficking protein

homolog B (S. cerevisiae)

Calculated MW:

25 kDa

Observed MW:

24 kDa

Purification Method:

Protein A purification

CloneNo.:

242659B3

Recommended Dilutions:

WB 1:5000-1:50000

Applications

Tested Applications:

WB, FC (Intra), ELISA

Species Specificity:

human, mouse, rat, hamster

Positive Controls:

WB : HeLa cells, MCF-7 cells, CHO cells, mouse brain tissue, rat brain tissue, fetal human brain tissue, human placenta tissue

Background Information

Soluble N-ethylmaleimide-sensitive factor (NSF) attachment protein receptor (SNARE) proteins are critical components of the membrane fusion machinery (PMID: 20163564). SEC22B is a SNARE involved in endoplasmic reticulum (ER)/Golgi membrane trafficking. SEC22B localizes to the ER-Golgi intermediate compartment (ERGIC) and has been identified as a regulator of antigen crosspresentation (PMID: 22153078).

Storage

Storage:

Store at -20°C. Stable for one year after shipment.

Storage Buffer:

PBS with 0.02% sodium azide and 50% glycerol, pH7.3

Aliquoting is unnecessary for -20°C storage

For technical support and original validation data for this product please contact:

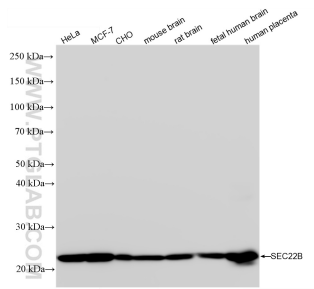
T: 4006900926

E: Proteintech-CN@ptglab.com

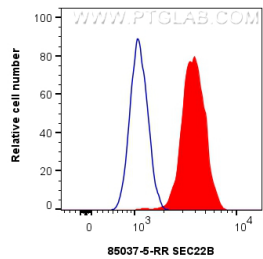
W: ptgcn.com

This product is exclusively available under Proteintech Group brand and is not available to purchase from any other manufacturer.

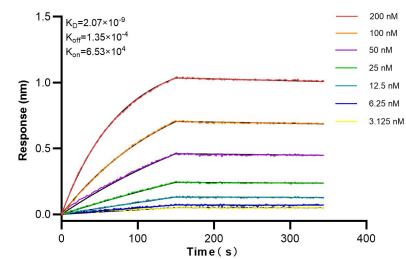
Selected Validation Data



Various lysates were subjected to SDS PAGE followed by western blot with 85037-5-RR (SEC22B antibody) at dilution of 1:10000 incubated at room temperature for 1.5 hours.



1x10⁶ SH-SY5Y cells were intracellularly stained with 0.25 ug SEC22B Recombinant antibody (85037-5-RR, Clone:242659B3) and CoraLite®488-Conjugated Goat Anti-Rabbit IgG(H+L) (SA00013-2) (red), or 0.25 ug Rabbit IgG Isotype Control RecAb (98136-1-RR, Clone: 240953C9) (blue). Cells were fixed with 4% PFA and permeabilized with Flow Cytometry Perm Buffer (PF00011-C).



Biolayer interferometry (BLI) kinetic assays of 85037-5-RR against Human SEC22B were performed. The affinity constant is 2.07 nM.