

For Research Use Only

C1r Recombinant antibody, PBS Only

Catalog Number: 85029-4-PBS



Basic Information

Catalog Number:

85029-4-PBS

Concentration:

1 mg/ml

Source:

Rabbit

Isotype:

IgG

Immunogen Catalog Number:

AG11390

GenBank Accession Number:

BC035220

GeneID (NCBI):

715

UNIPROT ID:

P00736

Full Name:

complement component 1, r
subcomponent

Calculated MW:

705 aa, 80 kDa

Observed MW:

85 kDa

Purification Method:

Protein A purification

CloneNo.:

242596F5

Applications

Tested Applications:

WB, IHC, Indirect ELISA

Species Specificity:

human, mouse

Background Information

The first component of complement is a calcium-dependent complex of the 3 subcomponents C1q, C1r, and C1s. The serine protease subunits C1r and C1s form a Ca(2+)-dependent C1s-C1r-C1r-C1s tetramer. C1r acts by transforming the activation signal into an enzymic activity. C1r is a single-chain glycoprotein that can be cleaved into an A chain and a B chain upon activation.

Storage

Storage:

Store at -80°C.

The product is shipped with ice packs. Upon receipt, store it immediately at -80°C

Storage Buffer:

PBS only, pH7.3

For technical support and original validation data for this product please contact:

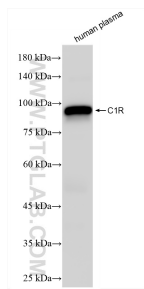
T: 4006900926

E: Proteintech-CN@ptglab.com

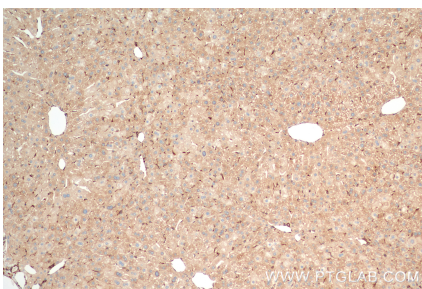
W: ptgcn.com

This product is exclusively available under Proteintech Group brand and is not available to purchase from any other manufacturer.

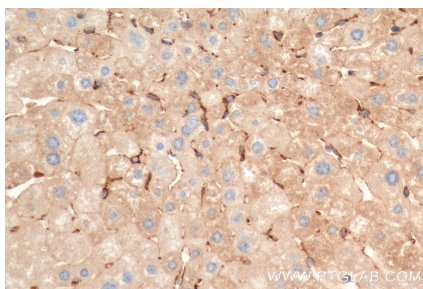
Selected Validation Data



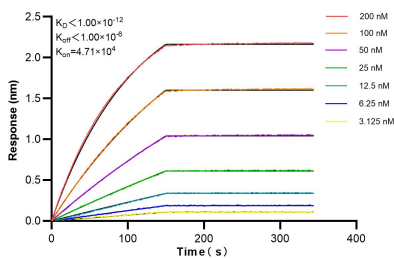
human plasma was subjected to SDS PAGE followed by western blot with 85029-4-RR (C1R antibody) at dilution of 1:10000 incubated at room temperature for 1.5 hours. This data was developed using the same antibody clone with 85029-4-PBS in a different storage buffer formulation.



Immunohistochemical analysis of paraffin-embedded mouse liver tissue slide using 85029-4-RR (C1r antibody) at dilution of 1:1000 (under 10x lens). Heat mediated antigen retrieval with Tris-EDTA buffer (pH 9.0). This data was developed using the same antibody clone with 85029-4-PBS in a different storage buffer formulation.



Immunohistochemical analysis of paraffin-embedded mouse liver tissue slide using 85029-4-RR (C1r antibody) at dilution of 1:1000 (under 40x lens). Heat mediated antigen retrieval with Tris-EDTA buffer (pH 9.0). This data was developed using the same antibody clone with 85029-4-PBS in a different storage buffer formulation.



Biolayer interferometry (BLI) kinetic assays of 85029-4-RR against Human C1r were performed. The affinity constant is below 1 pM.