

For Research Use Only

# C1R Recombinant antibody, PBS Only (Detector)

Catalog Number: 85029-3-PBS



## Basic Information

Catalog Number:

85029-3-PBS

Concentration:

1 mg/ml

Source:

Rabbit

Isotype:

IgG

Immunogen Catalog Number:

AG11390

GenBank Accession Number:

BC035220

GeneID (NCBI):

715

UNIPROT ID:

P00736

Full Name:

complement component 1, r subcomponent

Calculated MW:

705 aa, 80 kDa

Purification Method:

Protein A purification

CloneNo.:

242596E7

## Applications

Tested Applications:

Cytometric bead array, Sandwich ELISA, Indirect ELISA, Sample test

Species Specificity:

human

## Background Information

### Storage

Storage:

Store at -80°C.

The product is shipped with ice packs. Upon receipt, store it immediately at -80°C

Storage Buffer:

PBS only, pH7.3

For technical support and original validation data for this product please contact:

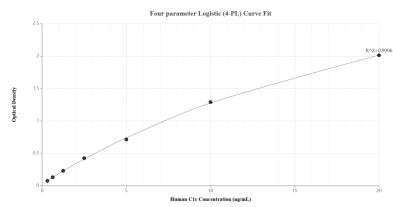
T: 4006900926

E: Proteintech-CN@ptglab.com

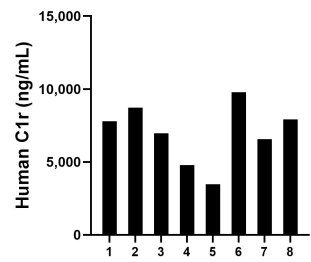
W: ptgcn.com

This product is exclusively available under Proteintech Group brand and is not available to purchase from any other manufacturer.

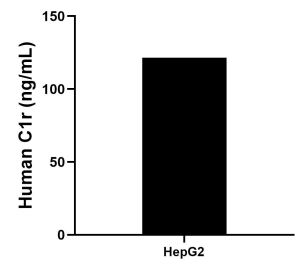
Selected Validation Data



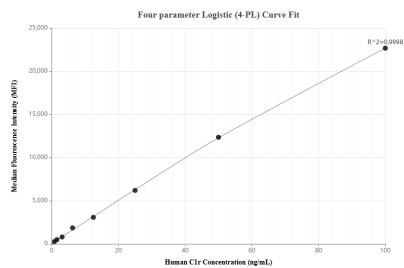
Sandwich ELISA standard curve of MP01761-1, Human C1r Recombinant Matched Antibody Pair - PBS only. 85029-1-PBS was coated to a plate as the capture antibody and incubated with serial dilutions of standard Ag11390. 85029-3-PBS was HRP conjugated as the detection antibody. Range: 0.313-20 ng/mL.



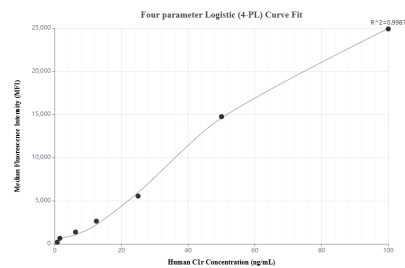
Serum of eight individual healthy human donors was measured. The C1r concentration of detected samples was determined to be 7,000.03 ng/mL with a range of 3,466.87-9,786.12 ng/mL.



The mean C1r concentration was determined to be 121.59 ng/mL in HepG2 cell extract based on a 1.00 mg/mL extract load.



Cytometric bead array standard curve of MP01761-1, C1r Recombinant Matched Antibody Pair, PBS Only. Capture antibody: 85029-1-PBS. Detection antibody: 85029-3-PBS. Standard: Ag11390. Range: 0.781-100 ng/mL.



Cytometric bead array standard curve of MP01761-2, C1r Recombinant Matched Antibody Pair, PBS Only. Capture antibody: 85029-2-PBS. Detection antibody: 85029-3-PBS. Standard: Ag11390. Range: 0.781-100 ng/mL.