

For Research Use Only

# C1R Recombinant antibody, PBS Only (Capture)

Catalog Number: 85029-1-PBS



## Basic Information

Catalog Number: 85029-1-PBS	GenBank Accession Number: BC035220	Purification Method: Protein A purification
Concentration: 1 mg/ml	GeneID (NCBI): 715	CloneNo.: 242596B12
Source: Rabbit	UNIPROT ID: P00736	
Isotype: IgG	Full Name: complement component 1, r subcomponent	
Immunogen Catalog Number: AG11390	Calculated MW: 705 aa, 80 kDa	

## Applications

**Tested Applications:**  
Cytometric bead array, Sandwich ELISA, Indirect ELISA,  
Sample test

**Species Specificity:**  
human

## Background Information

### Storage

**Storage:**  
Store at -80°C.  
**The product is shipped with ice packs. Upon receipt, store it immediately at -80°C**  
**Storage Buffer:**  
PBS Only

For technical support and original validation data for this product please contact:

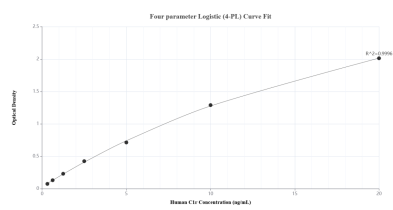
T: 4006900926

E: Proteintech-CN@ptglab.com

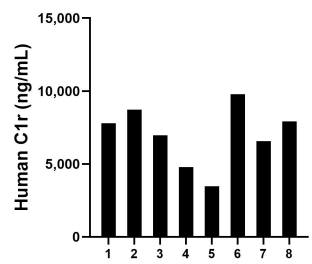
W: ptgcn.com

This product is exclusively available under Proteintech Group brand and is not available to purchase from any other manufacturer.

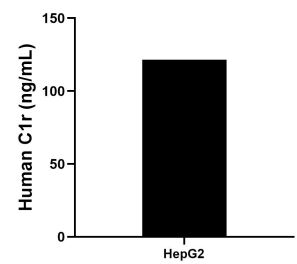
## Selected Validation Data



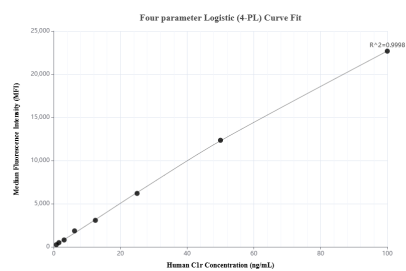
Sandwich ELISA standard curve of MP01761-1, Human C1r Recombinant Matched Antibody Pair - PBS only. 85029-1-PBS was coated to a plate as the capture antibody and incubated with serial dilutions of standard Ag11390. 85029-3-PBS was HRP conjugated as the detection antibody. Range: 0.313-20 ng/mL.



Serum of eight individual healthy human donors was measured. The C1r concentration of detected samples was determined to be 7,000.03 ng/mL with a range of 3,466.87-9,786.12 ng/mL.



The mean C1r concentration was determined to be 121.59 ng/mL in HepG2 cell extract based on a 1.00 mg/mL extract load.



Cytometric bead array standard curve of MP01761-1, C1r Recombinant Matched Antibody Pair, PBS Only. Capture antibody: 85029-1-PBS. Detection antibody: 85029-3-PBS. Standard: Ag11390. Range: 0.781-100 ng/mL.