

For Research Use Only

PDLIM1/CLP36 Recombinant monoclonal antibody, PBS Only

Catalog Number: 85027-5-PBS



Basic Information

Catalog Number:

85027-5-PBS

Source:

Rabbit

Isotype:

IgG

Immunogen Catalog Number:

AG2274

GenBank Accession Number:

BC000915

GeneID (NCBI):

9124

UNIPROT ID:

O00151

Full Name:

PDZ and LIM domain 1

Calculated MW:

329 aa, 36 kDa

Observed MW:

36 kDa

Purification Method:

Protein A purification

CloneNo.:

242585C7

Applications

Tested Applications:

WB, IHC, IF/ICC, FC (Intra), Indirect ELISA

Species Specificity:

human, mouse, rat

Background Information

PDLIM1, also named as CLIM1, CLP-36, CLP36, hCLIM1 and Elfin, is a member of the actinin-associated LIM protein (ALP)/enigma protein family, plays a role in neurite outgrowth in the peripheral nervous system. It is a cytoskeletal protein that may act as an adapter that brings other proteins (like kinases) to the cytoskeleton. PDLIM1 and PALLD formed a complex in the dorsal root ganglion (DRG) and PDLIM1 and PALLD were colocalized in the neurites and cell bodies of primary DRG neurons. PDLIM1 may interact with PALLD to influence neurite outgrowth during sciatic nerve regeneration. (PMID: 20381583)

Storage

Storage:

Store at -80°C.

The product is shipped with ice packs. Upon receipt, store it immediately at -80°C

Storage Buffer:

PBS only, pH7.3

For technical support and original validation data for this product please contact:

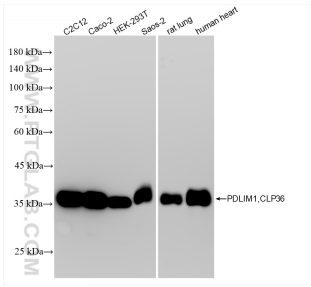
T: 4006900926

E: Proteintech-CN@ptglab.com

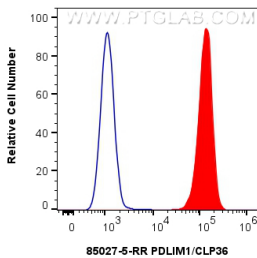
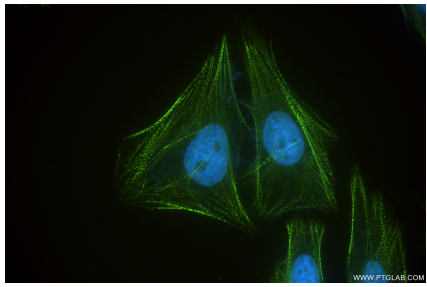
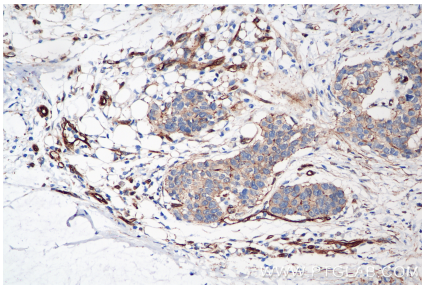
W: ptgcn.com

This product is exclusively available under Proteintech Group brand and is not available to purchase from any other manufacturer.

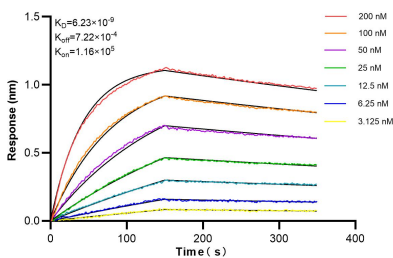
Selected Validation Data



Various lysates were subjected to SDS PAGE followed by western blot with 85027-5-RR (PDLIM1,CLP36 antibody) at dilution of 1:10000 incubated at room temperature for 1.5 hours. This data was developed using the same antibody clone with 85027-5-PBS in a different storage buffer formulation.



1x10⁶ HepG2 cells were intracellularly stained with 0.25 ug PDLIM1/CLP36 Recombinant antibody (85027-5-RR, Clone:242585C7) and CoraLite®488-Conjugated Goat Anti-Rabbit IgG(H+L) (SA00013-2)(red), or 0.25 ug Rabbit IgG Isotype Control RecAb (98136-1-RR, Clone: 240953C9) (blue). Cells were fixed with 4% PFA and permeabilized with Flow Cytometry Perm Buffer. This data was developed using the same antibody clone with 85027-5-PBS in



Biolayer interferometry (BLI) kinetic assays of 85027-5-RR against Human PDLIM1/CLP36 were performed. The affinity constant is 6.23 nM.