

For Research Use Only

DOCK11 Recombinant antibody, PBS Only (Capture)

Catalog Number:85022-3-PBS



Basic Information

Catalog Number:

85022-3-PBS

Concentration:

1 mg/ml

Source:

Rabbit

Isotype:

IgG

Immunogen Catalog Number:

AG35831

GenBank Accession Number:

NM_144658

GeneID (NCBI):

139818

UNIPROT ID:

Q5JSL3

Full Name:

dedicator of cytokinesis 11

Calculated MW:

238 kDa

Observed MW:

238 kDa

Purification Method:

Protein A purification

CloneNo.:

242575H5

Applications

Tested Applications:

WB, Cytometric bead array, Indirect ELISA

Species Specificity:

human, mouse

Background Information

DOCK11(also known as Zizimin2) is a member of CDM (Ced-5, DOCK180, and Myoblast City) family guanine nucleotide exchange factor mainly expressed in immune cells. As a guanine nucleotide exchange factor, DOCK11 activated the rho family GTPase cell division cycle 42 (CDC42), resulting in cytoskeletal reorganization.

Storage

Storage:

Store at -80°C.

The product is shipped with ice packs. Upon receipt, store it immediately at -80°C

Storage Buffer:

PBS only

For technical support and original validation data for this product please contact:

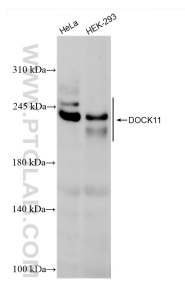
T: 4006900926

E: Proteintech-CN@ptglab.com

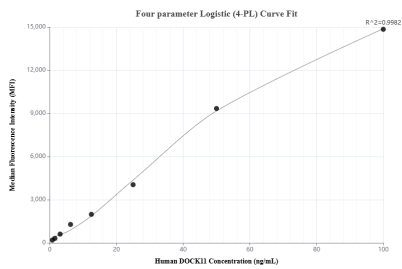
W: ptgcn.com

This product is exclusively available under Proteintech Group brand and is not available to purchase from any other manufacturer.

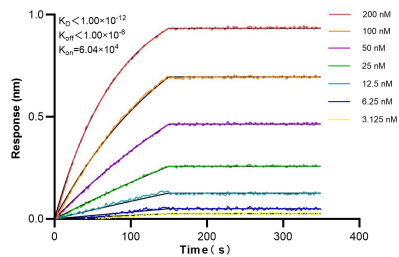
Selected Validation Data



Various lysates were subjected to SDS PAGE followed by western blot with 85022-3-RR (DOCK11 antibody) at dilution of 1:5000 incubated at room temperature for 1.5 hours. This data was developed using the same antibody clone with 85022-3-PBS in a different storage buffer formulation.



Cytometric bead array standard curve of MP01759-2, DOCK11 Recombinant Matched Antibody Pair, PBS Only. Capture antibody: 85022-3-PBS. Detection antibody: 85022-1-PBS. Standard: Ag35831. Range: 0.781-100 ng/mL.



Biolayer interferometry (BLI) kinetic assays of 85022-3-RR against Human DOCK11 were performed. The affinity constant is below 1 pM.