

For Research Use Only

NKp46/NCR1 Recombinant antibody

Catalog Number: 85021-4-RR



Basic Information

Catalog Number:

85021-4-RR

Concentration:

1000 µg/ml

Source:

Rabbit

Isotype:

IgG

GenBank Accession Number:

GeneID (NCBI):

9437

UNIPROT ID:

O76036-1

Full Name:

natural cytotoxicity triggering
receptor 1

Calculated MW:

34kDa

Purification Method:

Protein A purification

CloneNo.:

242549C5

Recommended Dilutions:

IF/ICC 1:200-1:800

Applications

Tested Applications:

IF/ICC, ELISA

Species Specificity:

human

Positive Controls:

IF/ICC : NK-92 cells,

Background Information

NKp46, also known as natural cytotoxicity triggering receptor 1 (NCR1), is a type I transmembrane protein belonging to the immunoglobulin superfamily. NKp46 is a key activating receptor expressed on natural killer (NK) cells. It plays a key role in the innate immune response by recognizing and binding to viral hemagglutinins and other ligands on infected or tumor cells. NKp46 mediates cytotoxicity and cytokine production upon engagement with its ligands, contributing to the elimination of infected or malignant cells. Its expression and function are tightly regulated, and dysregulation of NKp46 has been implicated in various diseases, including viral infections, cancer, and autoimmune disorders. (PMID: 11234016; 29329948; 9730896; 9314561).

Storage

Storage:

Store at -20°C. Stable for one year after shipment.

Storage Buffer:

PBS with 0.02% sodium azide and 50% glycerol pH 7.3.

Aliquoting is unnecessary for -20°C storage

For technical support and original validation data for this product please contact:

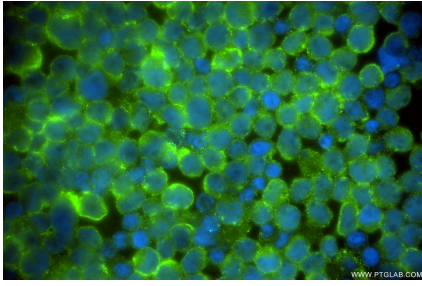
T: 4006900926

E: Proteintech-CN@ptglab.com

W: ptgcn.com

This product is exclusively available under Proteintech Group brand and is not available to purchase from any other manufacturer.

Selected Validation Data



Immunofluorescent analysis of (4% PFA) fixed NK-92 cells using NKp46/NCR1/CD335 antibody (85021-4-RR, Clone: 242549C5) at dilution of 1:400 and CoraLite®488-Conjugated Goat Anti-Rabbit IgG(H+L) (SA00013-2).