

For Research Use Only

# SMARCA2-Specific Recombinant antibody, PBS Only (Capture/Detector)

Catalog Number: 85018-1-PBS



## Basic Information

Catalog Number:

85018-1-PBS

Size:

1 mg/ml

Source:

Rabbit

Isotype:

IgG

Immunogen Catalog Number:

AG25157

GenBank Accession Number:

NM\_003070

GeneID (NCBI):

6595

UNIPROT ID:

P51531

Full Name:

SWI/SNF related, matrix associated, actin dependent regulator of chromatin, subfamily a, member 2

Calculated MW:

181 kDa

Purification Method:

Protein A purification

CloneNo.:

242511C7

## Applications

Tested Applications:

Cytometric bead array, Sandwich ELISA, Indirect ELISA, Sample test

Species Specificity:

human

## Background Information

### Storage

Storage:

Store at -80°C.

The product is shipped with ice packs. Upon receipt, store it immediately at -80°C

Storage Buffer:

PBS Only

For technical support and original validation data for this product please contact:

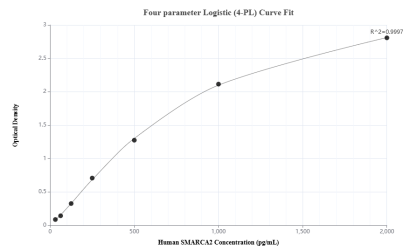
T: 4006900926

E: [Proteintech-CN@ptglab.com](mailto:Proteintech-CN@ptglab.com)

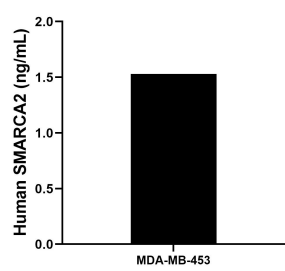
W: [ptgcn.com](http://ptgcn.com)

This product is exclusively available under Proteintech Group brand and is not available to purchase from any other manufacturer.

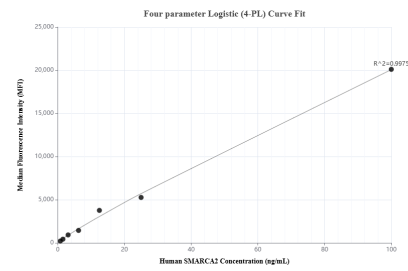
# Selected Validation Data



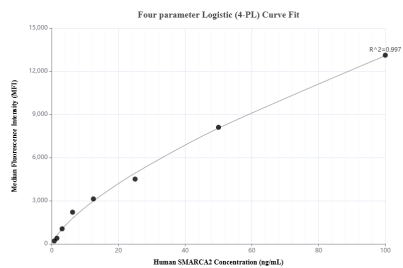
Sandwich ELISA standard curve of MP01752-3, Human SMARCA2 Recombinant Matched Antibody Pair - PBS only. 85018-3-PBS was coated to a plate as the capture antibody and incubated with serial dilutions of standard Ag25157. 85018-1-PBS was HRP conjugated as the detection antibody. Range: 31.3-2000 pg/mL



The mean SMARCA2 concentration was determined to be 1.53 ng/mL in MDA-MB-453 cell extract based on a 1.5 mg/mL extract load.



Cytometric bead array standard curve of MP01752-1, SMARCA2 Recombinant Matched Antibody Pair, PBS Only. Capture antibody: 85018-2-PBS. Detection antibody: 85018-1-PBS. Standard: Ag25157. Range: 0.781-100 ng/mL



Cytometric bead array standard curve of MP01752-2, SMARCA2 Recombinant Matched Antibody Pair, PBS Only. Capture antibody: 85018-1-PBS. Detection antibody: 85018-3-PBS. Standard: Ag25157. Range: 0.781-100 ng/mL