

For Research Use Only

LRRC41 Recombinant antibody, PBS Only

Catalog Number: 85012-4-PBS



Basic Information

Catalog Number: 85012-4-PBS	GenBank Accession Number: BC004953	Purification Method: Protein A purification
Concentration: 1 mg/ml	GeneID (NCBI): 10489	CloneNo.: 242380D2
Source: Rabbit	UNIPROT ID: Q15345	
Isotype: IgG	Full Name: leucine rich repeat containing 41	
Immunogen Catalog Number: AG14266	Calculated MW: 812 aa, 87 kDa	
	Observed MW: 80-90 kDa	

Applications

Tested Applications:
WB, Indirect ELISA

Species Specificity:
human, mouse, rat

Background Information

The leucine-rich repeat containing 41 (LRRC41), a protein-coding gene, is widely expressed across various tissues, such as the thyroid and ovary tissues, characterized by two sub-structural domains.

Storage

Storage:
Store at -80°C.
The product is shipped with ice packs. Upon receipt, store it immediately at -80°C

Storage Buffer:
PBS only, pH7.3

For technical support and original validation data for this product please contact:

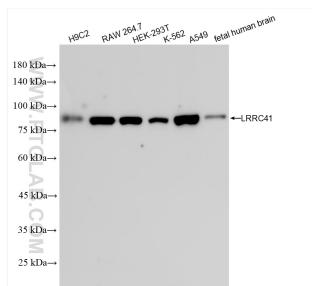
T: 4006900926

E: Proteintech-CN@ptglab.com

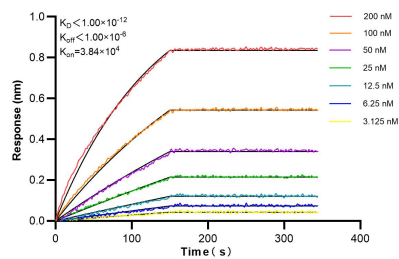
W: ptgcn.com

This product is exclusively available under Proteintech Group brand and is not available to purchase from any other manufacturer.

Selected Validation Data



Various lysates were subjected to SDS PAGE followed by western blot with 85012-4-RR (LRRC41 antibody) at dilution of 1:10000 incubated at room temperature for 1.5 hours. This data was developed using the same antibody clone with 85012-4-PBS in a different storage buffer formulation.



Biolayer interferometry (BLI) kinetic assays of 85012-4-RR against Human LRRC41 were performed. The affinity constant is below 1 pM.