

For Research Use Only

LAIR1 Recombinant antibody

Catalog Number: 85010-1-RR



Basic Information

Catalog Number:

85010-1-RR

Size:

1000 µg/ml

Source:

Rabbit

Isotype:

IgG

GenBank Accession Number:

NM_001113474.1

GeneID (NCBI):

52855

UNIPROT ID:

Q8BG84-1

Full Name:

Leukocyte-associated Ig-like receptor 1

Calculated MW:

30kDa

Observed MW:

35 kDa, 45 kDa

Purification Method:

Protein A purification

CloneNo.:

242226B10

Recommended Dilutions:

WB 1:500-1:2000

IF/ICC 1:200-1:800

Applications

Tested Applications:

WB, IF/ICC, ELISA

Species Specificity:

mouse

Positive Controls:

WB : mouse spleen tissue,

IF/ICC : RAW 264.7 cells,

Background Information

Leukocyte-associated immunoglobulin-like receptor 1 (LAIR1) is a transmembrane glycoprotein with a single immunoglobulin-like domain and a cytoplasmic tail containing two immune receptor tyrosine-based inhibitory motifs (PMID: 9285412). LAIR1 is expressed on the majority of human PBMCs, including NK, T, B, monocytes, and dendritic cells, as well as the majority of thymocytes (PMID: 10229813). It functions as an inhibitory receptor that plays a constitutive negative regulatory role on cytolytic function of NK cells, B cells and T cells. LAIR1 is a collagen receptor (PMID: 16754721). Tumor-expressed collagens can modulate immune cell function through the inhibitory collagen receptor LAIR1 (PMID: 21955987).

Storage

Storage:

Store at -20°C. Stable for one year after shipment.

Storage Buffer:

PBS with 0.02% sodium azide and 50% glycerol pH 7.3.

Aliquoting is unnecessary for -20°C storage

For technical support and original validation data for this product please contact:

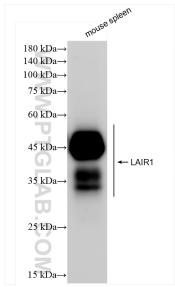
T: 4006900926

E: Proteintech-CN@ptglab.com

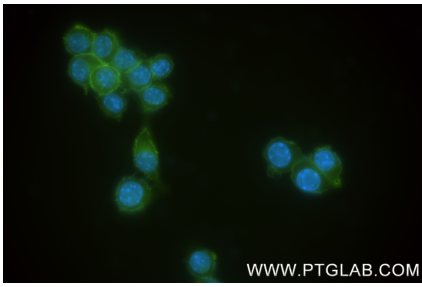
W: ptgcn.com

This product is exclusively available under Proteintech Group brand and is not available to purchase from any other manufacturer.

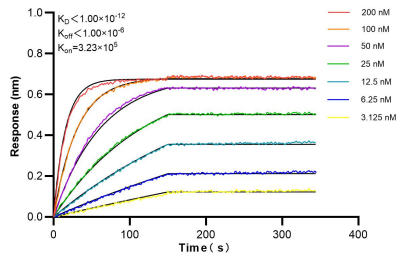
Selected Validation Data



mouse spleen tissue were subjected to SDS PAGE followed by western blot with 85010-1-RR (LAIR1 antibody) at dilution of 1:1000 incubated at room temperature for 1.5 hours.



Immunofluorescent analysis of (4% PFA) fixed RAW 264.7 cells using LAIR1 antibody (85010-1-RR, Clone: 242226B10) at dilution of 1:400 and CoraLite® 488-Conjugated Goat Anti-Rabbit IgG(H+L) (SA00013-2).



Biolayer interferometry (BLI) kinetic assays of 85010-1-RR against Mouse LAIR1 were performed. The affinity constant is below 1 pM.