

For Research Use Only

DCBLD2 Recombinant antibody, PBS Only (Detector)

Catalog Number: 85000-2-PBS



Basic Information

Catalog Number:

85000-2-PBS

Concentration:

1 mg/ml

Source:

Rabbit

Isotype:

IgG

Immunogen Catalog Number:

AG32823

GenBank Accession Number:

BC029658

GeneID (NCBI):

131566

UNIPROT ID:

Q96PD2

Full Name:

discoïdin, CUB and LCCL domain containing 2

Calculated MW:

775 aa, 89 kDa

Purification Method:

Protein A purification

CloneNo.:

242604F5

Applications

Tested Applications:

Cytometric bead array, Sandwich ELISA, Indirect ELISA, Sample test

Species Specificity:

human

Background Information

Storage

Storage:

Store at -80°C.

The product is shipped with ice packs. Upon receipt, store it immediately at -80°C

Storage Buffer:

PBS only, pH7.3

For technical support and original validation data for this product please contact:

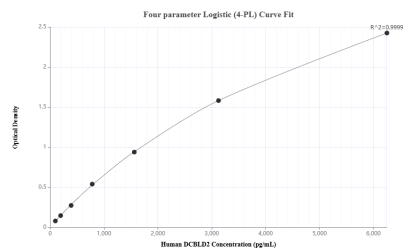
T: 4006900926

E: Proteintech-CN@ptglab.com

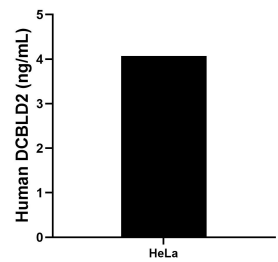
W: ptgcn.com

This product is exclusively available under Proteintech Group brand and is not available to purchase from any other manufacturer.

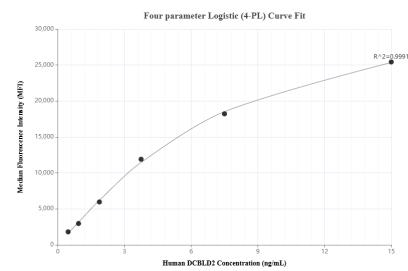
Selected Validation Data



Sandwich ELISA standard curve of MP01733-1, Human DCBLD2 Recombinant Matched Antibody Pair - PBS only. 85000-3-PBS was coated to a plate as the capture antibody and incubated with serial dilutions of standard Ag32823. 85000-2-PBS was HRP conjugated as the detection antibody. Range: 97.7-6250 pg/mL



The mean DCBLD2 concentration was determined to be 4.07 ng/mL in HeLa cell extract based on a 1.5 mg/mL extract load.



Cytometric bead array standard curve of MP01733-1, DCBLD2 Recombinant Matched Antibody Pair, PBS Only. Capture antibody: 85000-3-PBS. Detection antibody: 85000-2-PBS. Standard: Ag32823. Range: 0.469-15 ng/mL