

For Research Use Only

ATP1A2 Recombinant antibody, PBS Only (Detector)

Catalog Number: 84999-2-PBS



Basic Information

Catalog Number:

84999-2-PBS

Concentration:

1 mg/ml

Source:

Rabbit

Isotype:

IgG

Immunogen Catalog Number:

AG10489

GenBank Accession Number:

BC052271

GeneID (NCBI):

477

UNIPROT ID:

P50993

Full Name:

ATPase, Na⁺/K⁺ transporting, alpha 2
(+) polypeptide

Calculated MW:

1020 aa, 112 kDa

Purification Method:

Protein A purification

CloneNo.:

242414F5

Applications

Tested Applications:

Cytometric bead array, Sandwich ELISA, Indirect ELISA,
Sample test

Species Specificity:

human

Background Information

Storage

Storage:

Store at -80°C.

The product is shipped with ice packs. Upon receipt, store it immediately at -80°C

Storage Buffer:

PBS only, pH7.3

For technical support and original validation data for this product please contact:

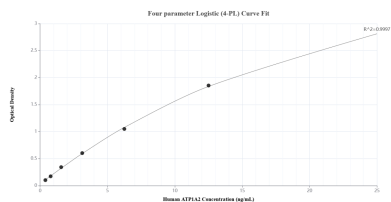
T: 4006900926

E: Proteintech-CN@ptglab.com

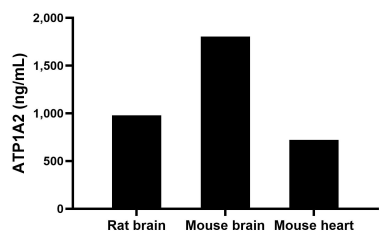
W: ptgcn.com

This product is exclusively available under Proteintech Group brand and is not available to purchase from any other manufacturer.

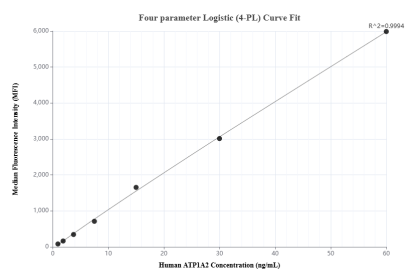
Selected Validation Data



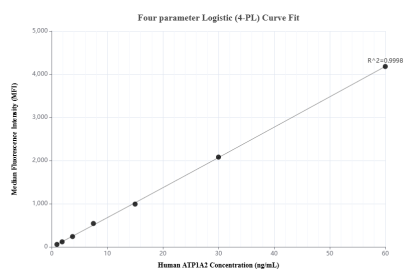
Sandwich ELISA standard curve of MP01738-1, Human ATP1A2 Recombinant Matched Antibody Pair - PBS only. 84999-3-PBS was coated to a plate as the capture antibody and incubated with serial dilutions of standard Ag10489. 84999-2-PBS was HRP conjugated as the detection antibody. Range: 0.391-25 ng/mL.



The mean ATP1A2 concentration was determined to be 976.80 ng/mL in rat brain tissue extract based on a 1.60 mg/mL extract load, 1,802.51 ng/mL in mouse brain tissue extract based on a 2.20 mg/mL extract load and 719.92 ng/mL in mouse heart tissue extract based on a 1.40 mg/mL extract load.



Cytometric bead array standard curve of MP01738-1, ATP1A2 Recombinant Matched Antibody Pair, PBS Only. Capture antibody: 84999-3-PBS. Detection antibody: 84999-2-PBS. Standard: Ag10489. Range: 0.938-60 ng/mL.



Cytometric bead array standard curve of MP01738-2, ATP1A2 Recombinant Matched Antibody Pair, PBS Only. Capture antibody: 84999-1-PBS. Detection antibody: 84999-2-PBS. Standard: Ag10489. Range: 0.938-60 ng/mL.