

For Research Use Only

TBX4/5 Recombinant antibody, PBS Only

Catalog Number: 84997-4-PBS



Basic Information

Catalog Number:

84997-4-PBS

Concentration:

1000 µg/ml

Source:

Rabbit

Isotype:

IgG

Immunogen Catalog Number:

AG3845

GenBank Accession Number:

BC027942

GeneID (NCBI):

6910

UNIPROT ID:

Q99593

Full Name:

T-box 5

Calculated MW:

518 aa, 57 kDa

Purification Method:

Protein A purification

CloneNo.:

242565F1

Applications

Tested Applications:

IF/ICC, Indirect ELISA

Species Specificity:

human

Background Information

T-box genes encode a family of transcription factors that have been identified in all metazoans and which play diverse roles during embryonic development. TBX5, a member of T-box family, has an essential role in the initiation of limb outgrowth and heart development. Genetic variation near TBX5 that associates with PR and/or QRS interval variation, which suggests that TBX5 plays a role in CCS function in the general population. Because 77 % amino acid sequence of TBX5 is identical to TBX4, this antibody recognizes both TBX4 and TBX5.

Storage

Storage:

Store at -80°C.

The product is shipped with ice packs. Upon receipt, store it immediately at -80°C

Storage Buffer:

PBS Only

For technical support and original validation data for this product please contact:

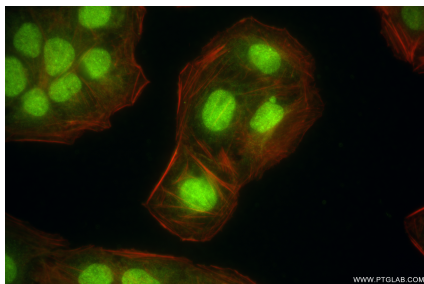
T: 4006900926

E: Proteintech-CN@ptglab.com

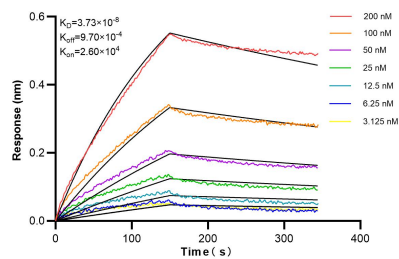
W: ptgcn.com

This product is exclusively available under Proteintech Group brand and is not available to purchase from any other manufacturer.

Selected Validation Data



Immunofluorescent analysis of (4% PFA) fixed U2OS cells using TBX5 antibody (84997-4-RR, Clone: 242565F1) at dilution of 1:800 and CoraLite®488-Conjugated Goat Anti-Rabbit IgG(H+L) (SA00013-2), CLS94-Phalloidin (red). This data was developed using the same antibody clone with 84997-4-PBS in a different storage buffer formulation.



Biolayer interferometry (BLI) kinetic assays of 84997-4-RR against Human TBX4/5 were performed. The affinity constant is 37.3 nM.