

For Research Use Only

YBX1 Recombinant antibody, PBS Only (Detector)

Catalog Number: 84993-3-PBS



Basic Information

Catalog Number:

84993-3-PBS

Concentration:

1000 ug/ml

Source:

Rabbit

Isotype:

IgG

Immunogen Catalog Number:

AG14129

GenBank Accession Number:

BC010430

GeneID (NCBI):

4904

UNIPROT ID:

P67809

Full Name:

Y box binding protein 1

Calculated MW:

324 aa, 36 kDa

Purification Method:

Protein A purification

CloneNo.:

242462G1

Applications

Tested Applications:

Cytometric bead array, Sandwich ELISA, Indirect ELISA, Sample test

Species Specificity:

human

Background Information

Storage

Storage:

Store at -80°C.

The product is shipped with ice packs. Upon receipt, store it immediately at -80°C

Storage Buffer:

PBS only, pH7.3

For technical support and original validation data for this product please contact:

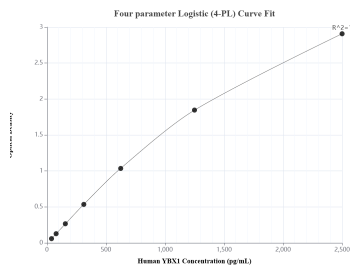
T: 4006900926

E: Proteintech-CN@ptglab.com

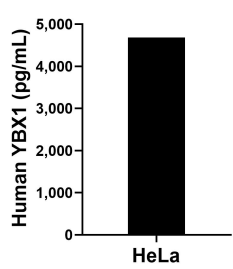
W: ptgcn.com

This product is exclusively available under Proteintech Group brand and is not available to purchase from any other manufacturer.

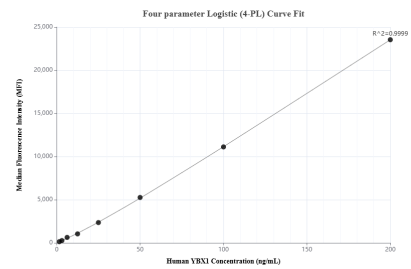
Selected Validation Data



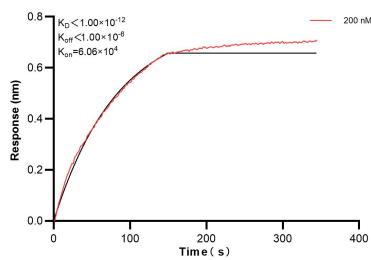
Sandwich ELISA standard curve of MP01766-1, Human YBX1 Recombinant Matched Antibody Pair - PBS only. 84993-2-PBS was coated to a plate as the capture antibody and incubated with serial dilutions of standard Ag14129. 84993-3-PBS was HRP conjugated as the detection antibody. Range: 39.1-2500 pg/mL



The mean YBX1 concentration was determined to be 4,684.7 pg/mL in HeLa cell extract based on a 1.3 mg/mL extract load.



Cytometric bead array standard curve of MP01766-1, YBX1 Recombinant Matched Antibody Pair, PBS Only. Capture antibody: 84993-2-PBS. Detection antibody: 84993-3-PBS. Standard: Ag14129. Range: 1.563-200 ng/mL



Bi-layer interferometry (BLI) kinetic assay of 84993-3-PBS against Human YBX1 was performed. The affinity constant is below 1 pM.