

For Research Use Only

YBX1 Recombinant antibody, PBS Only (Capture)

Catalog Number: 84993-2-PBS



Basic Information

Catalog Number:	84993-2-PBS	GenBank Accession Number:	BC010430	Purification Method:	Protein A purification
Concentration:	1000 ug/ml	GeneID (NCBI):	4904	CloneNo.:	242462D2
Source:	Rabbit	UNIPROT ID:	P67809		
Isotype:	IgG	Full Name:	Y box binding protein 1		
Immunogen Catalog Number:	AG14129	Calculated MW:	324 aa, 36 kDa		

Applications

Tested Applications:
Cytometric bead array, Sandwich ELISA, Indirect ELISA, Sample test

Species Specificity:
human

Background Information

Storage

Storage:
Store at -80°C.
The product is shipped with ice packs. Upon receipt, store it immediately at -80°C

Storage Buffer:
PBS only, pH7.3

For technical support and original validation data for this product please contact:

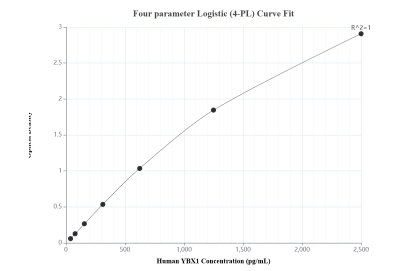
T: 4006900926

E: Proteintech-CN@ptglab.com

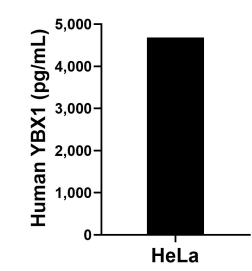
W: ptgcn.com

This product is exclusively available under Proteintech Group brand and is not available to purchase from any other manufacturer.

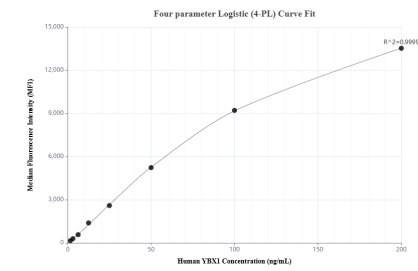
Selected Validation Data



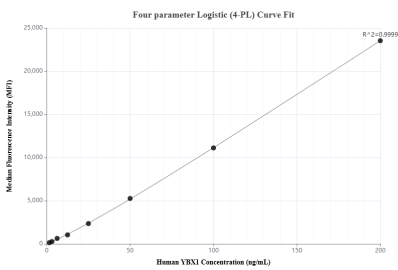
Sandwich ELISA standard curve of MP01766-1, Human YBX1 Recombinant Matched Antibody Pair - PBS only. 84993-2-PBS was coated to a plate as the capture antibody and incubated with serial dilutions of standard Ag14129. 84993-3-PBS was HRP conjugated as the detection antibody. Range: 39.1-2500 pg/mL



The mean YBX1 concentration was determined to be 4,684.7 pg/mL in HeLa cell extract based on a 1.3 mg/mL extract load.



Cytometric bead array standard curve of MP01766-2, YBX1 Recombinant Matched Antibody Pair, PBS Only. Capture antibody: 84993-2-PBS. Detection antibody: 84993-1-PBS. Standard: Ag14129. Range: 1.563-200 ng/mL



Cytometric bead array standard curve of MP01766-1, YBX1 Recombinant Matched Antibody Pair, PBS Only. Capture antibody: 84993-2-PBS. Detection antibody: 84993-3-PBS. Standard: Ag14129. Range: 1.563-200 ng/mL