

For Research Use Only

TBC1D5 Recombinant antibody, PBS Only (Capture)

Catalog Number: 84990-2-PBS



Basic Information

Catalog Number:	84990-2-PBS	GenBank Accession Number:	BC013145	Purification Method:	Protein A purification
Concentration:	1 mg/ml	GeneID (NCBI):	9779	CloneNo.:	242534G10
Source:	Rabbit	UNIPROT ID:	Q92609		
Isotype:	IgG	Full Name:	TBC1 domain family, member 5		
Immunogen Catalog Number:	AG10991	Calculated MW:	795 aa, 89 kDa		

Applications

Tested Applications:
Cytometric bead array, Sandwich ELISA, Indirect ELISA, Sample test

Species Specificity:
human

Background Information

Storage

Storage:
Store at -80°C.
The product is shipped with ice packs. Upon receipt, store it immediately at -80°C

Storage Buffer:
PBS only, pH7.3

For technical support and original validation data for this product please contact:

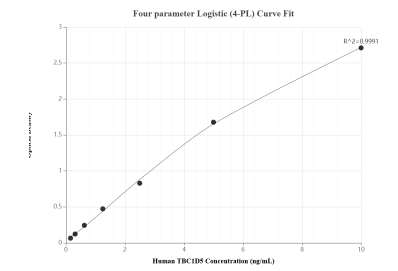
T: 4006900926

E: Proteintech-CN@ptglab.com

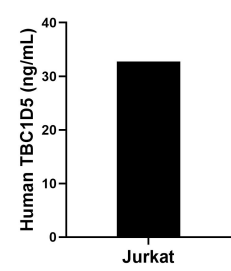
W: ptgcn.com

This product is exclusively available under Proteintech Group brand and is not available to purchase from any other manufacturer.

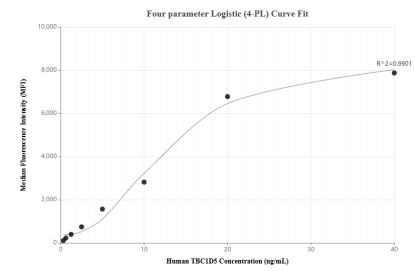
Selected Validation Data



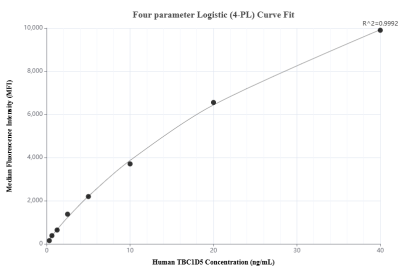
Sandwich ELISA standard curve of MP01735-2, Human TBC1D5 Recombinant Matched Antibody Pair - PBS only. 84990-2-PBS was coated to a plate as the capture antibody and incubated with serial dilutions of standard Ag10991. 84990-1-PBS was HRP conjugated as the detection antibody. Range: 0.156-10 ng/mL



The mean TBC1D5 concentration was determined to be 32.73 ng/mL in Jurkat cell extract based on a 2.00 mg/mL extract load.



Cytometric bead array standard curve of MP01735-2, TBC1D5 Recombinant Matched Antibody Pair, PBS Only. Capture antibody: 84990-2-PBS. Detection antibody: 84990-1-PBS. Standard: Ag10991. Range: 0.313-40 ng/mL



Cytometric bead array standard curve of MP01735-1, TBC1D5 Recombinant Matched Antibody Pair, PBS Only. Capture antibody: 84990-2-PBS. Detection antibody: 84990-3-PBS. Standard: Ag10991. Range: 0.313-40 ng/mL