

For Research Use Only

# GATA6 Recombinant antibody, PBS Only (Detector)

Catalog Number: 84987-2-PBS



## Basic Information

Catalog Number:

84987-2-PBS

Size:

1 mg/ml

Source:

Rabbit

Isotype:

IgG

GenBank Accession Number:

NM\_005257

GeneID (NCBI):

2627

UNIPROT ID:

Q92908

Full Name:

GATA binding protein 6

Calculated MW:

60 kDa

Purification Method:

Protein A purification

CloneNo.:

242325F7

## Applications

Tested Applications:

Sandwich ELISA, Indirect ELISA, Sample test

Species Specificity:

human

## Background Information

### Storage

Storage:

Store at -80°C.

The product is shipped with ice packs. Upon receipt, store it immediately at -80°C

Storage Buffer:

PBS Only

For technical support and original validation data for this product please contact:

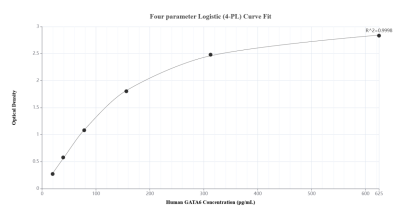
T: 4006900926

E: [Proteintech-CN@ptglab.com](mailto:Proteintech-CN@ptglab.com)

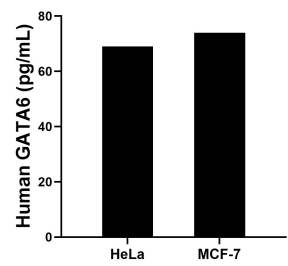
W: [ptgcn.com](http://ptgcn.com)

This product is exclusively available under Proteintech Group brand and is not available to purchase from any other manufacturer.

## Selected Validation Data



Sandwich ELISA standard curve of MP01729-1, Human GATA6 Recombinant Matched Antibody Pair - PBS only. 84987-1-PBS was coated to a plate as the capture antibody and incubated with serial dilutions of standard SY01506. 84987-2-PBS was HRP conjugated as the detection antibody. Range: 19.5-625 pg/mL



The mean GATA6 concentration was determined to be 69.0 pg/mL in HeLa cell extract based on a 1.0 mg/mL extract load and 74.0 pg/mL in MCF-7 cell extract based on a 1.2 mg/mL extract load.