

For Research Use Only

PCM1 Recombinant antibody

Catalog Number: 84979-2-RR



Basic Information

Catalog Number: 84979-2-RR	GenBank Accession Number: BC000453	Purification Method: Protein A purification
Concentration: 1000 ug/ml	GeneID (NCBI): 5108	CloneNo.: 242199D6
Source: Rabbit	UNIPROT ID: Q15154	Recommended Dilutions: IHC 1:50-1:500 IF/ICC 1:250-1:1000
Isotype: IgG	Full Name: pericentriolar material 1	
Immunogen Catalog Number: AG13977	Calculated MW: 2024 aa, 228 kDa	

Applications

Tested Applications: IHC, IF/ICC, FC (Intra), ELISA	Positive Controls: IHC : mouse heart tissue, IF/ICC : HepG2 cells, HeLa cells
Species Specificity: human, mouse	
Note-IHC: suggested antigen retrieval with TE buffer pH 9.0; (*) Alternatively, antigen retrieval may be performed with citrate buffer pH 6.0	

Background Information

Pericentriolar material 1 (PCM1) is a component of centriolar satellites, which are electron dense granules scattered around centrosomes (PMID: 10579718). PCM1 is required for centrosome assembly and function. It acts as a scaffold to target several proteins to the centrosome in a dynein motor-dependent manner and regulate microtubular dynamics (PMID:18762586; 12403812). It is also involved in the biogenesis of cilia (PMID: 18772192). Chromosomal aberrations involving PCM1 gene are associated with papillary thyroid carcinomas and a variety of hematological malignancies, including atypical chronic myeloid leukemia and T-cell lymphoma. (PMID: 10980597; 16091753; 15805263; 16424865).

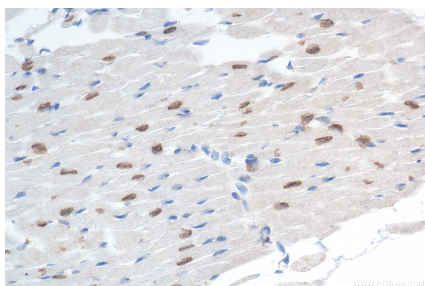
Storage

Storage:
Store at -20°C. Stable for one year after shipment.
Storage Buffer:
PBS with 0.02% sodium azide and 50% glycerol pH 7.3.
Aliquoting is unnecessary for -20° C storage

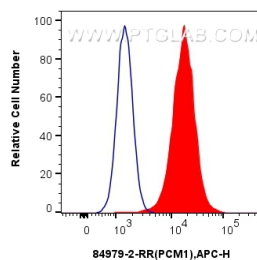
For technical support and original validation data for this product please contact:
T: 4006900926 E: Proteintech-CN@ptglab.com W: ptgcn.com

This product is exclusively available under Proteintech Group brand and is not available to purchase from any other manufacturer.

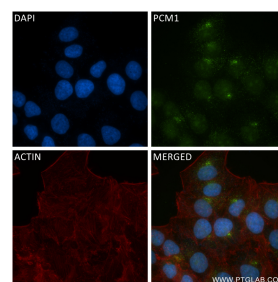
Selected Validation Data



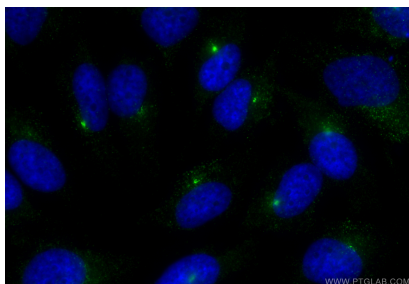
Immunohistochemical analysis of paraffin-embedded mouse heart tissue slide using 84979-2-RR (PCM1 antibody) at dilution of 1:200 (under 40x lens). Heat mediated antigen retrieval with Tris-EDTA buffer (pH 9.0).



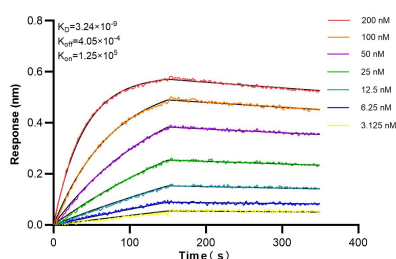
1×10^6 K562 were intracellularly stained with 0.25 ug PCM1 Recombinant antibody (84979-2-RR, Clone:242199D6) and APC-Conjugated Goat Anti-Rabbit IgG(H+L)(red), or 0.25 ug Rabbit IgG Isotype Control Recombinant Antibody (98136-1-RR, Clone: 240953C9) (blue). Cells were fixed with 4% PFA and permeabilized with Flow Cytometry Perm Buffer (PF00011-C).



Immunofluorescent analysis of (4% PFA) fixed HepG2 cells using PCM1 antibody (84979-2-RR, Clone: 242199D6) at dilution of 1:500 and CoraLite®488-Conjugated Goat Anti-Rabbit IgG(H+L) (SA00013-2), CL594-Phalloidin (red).



Immunofluorescent analysis of (-20°C Methanol) fixed HeLa cells using PCM1 antibody (84979-2-RR, Clone: 242199D6) at dilution of 1:400 and CoraLite®488-Conjugated Goat Anti-Rabbit IgG(H+L) (SA00013-2).



Biolayer interferometry (BLI) kinetic assays of 84979-2-RR against Human PCM1 were performed. The affinity constant is 3.24 nM.