

# Cytokeratin 17-specific Recombinant antibody

Catalog Number: 84978-1-RR

## Basic Information

**Catalog Number:**

84978-1-RR

**Concentration:**

1000 ug/ml

**Source:**

Rabbit

**Isotype:**

IgG

**GenBank Accession Number:**

NM\_000422

**GeneID (NCBI):**

3872

**UNIPROT ID:**

Q04695

**Full Name:**

keratin 17

**Calculated MW:**

48 kDa

**Observed MW:**

48 kDa

**Purification Method:**

Protein A purification

**CloneNo.:**

242240A8

**Recommended Dilutions:**

WB 1:5000-1:50000

IHC 1:3000-1:12000

IF/ICC 1:250-1:1000

## Applications

**Tested Applications:**

WB, IHC, IF/ICC, FC (Intra), ELISA

**Species Specificity:**

human, mouse, rat

**Note-IHC: suggested antigen retrieval with TE buffer pH 9.0; (\*) Alternatively, antigen retrieval may be performed with citrate buffer pH 6.0**

**Positive Controls:**

**WB :** HeLa cells, A431 cells, mouse skin tissue, rat skin tissue

**IHC :** human skin cancer tissue, human cervical cancer tissue

**IF/ICC :** HeLa cells, A431 cells

## Background Information

Keratins are a large family of proteins that form the intermediate filaments that make up the cytoskeleton. Type I keratins are a group of acidic intermediate filament proteins and type II keratins are the basic or neutral counterparts. Keratin 17 is encoded by the KRT17 gene and is a type I cytokeratin found in nail beds, hair follicles, sebaceous glands, and epidermal appendages. The molecular weight of cytokeratin 17 is approximately 49 kDa. Cytokeratin 17 plays a role in the formation and maintenance of epidermal appendages, especially in determining the shape and orientation of hair. It is required for the maintenance of the anagen (growth) state of hair follicles by modulating the function of TNF-alpha for hair cycling and is also involved in tissue repair (PMID: 16702408).

## Storage

**Storage:**

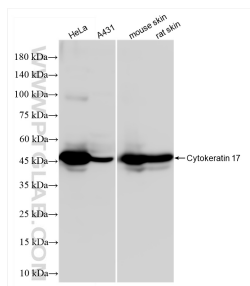
Store at -20°C. Stable for one year after shipment.

**Storage Buffer:**

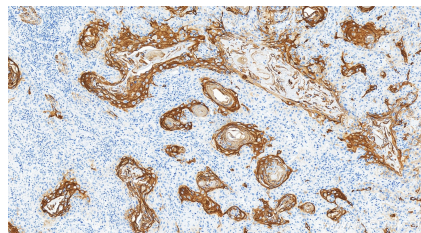
PBS with 0.02% sodium azide and 50% glycerol

Aliquoting is unnecessary for -20°C storage

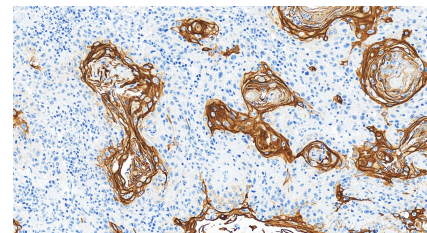
## Selected Validation Data



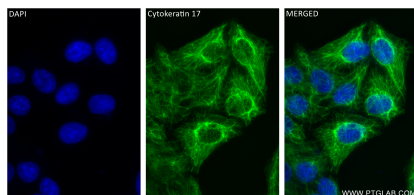
Various lysates were subjected to SDS PAGE followed by western blot with 84978-1-RR (KRT17-Specific antibody) at dilution of 1:10000 incubated at room temperature for 1.5 hours.



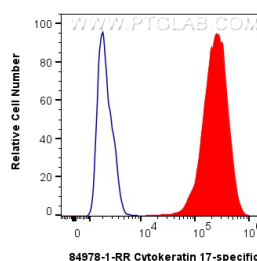
Immunohistochemical analysis of paraffin-embedded human skin cancer tissue slide using 84978-1-RR (Cytokeratin 17-specific antibody) at dilution of 1:6000 (under 20x lens). Heat mediated antigen retrieval with Tris-EDTA buffer (pH 9.0).



Immunohistochemical analysis of paraffin-embedded human skin cancer tissue slide using 84978-1-RR (Cytokeratin 17-specific antibody) at dilution of 1:6000 (under 20x lens). Heat mediated antigen retrieval with Tris-EDTA buffer (pH 9.0).



Immunofluorescent analysis of (-20°C Methanol) fixed HeLa cells using Cytokeratin 17-Specific antibody (84978-1-RR, Clone: 242240A8) at dilution of 1:500 and CoraLite®488-Conjugated Goat Anti-Rabbit IgG(H+L) (SA00013-2), CL594-Phalloidin (red).



1x10<sup>6</sup> HeLa cells were intracellularly stained with 0.25 ug Cytokeratin 17-specific Recombinant antibody (84978-1-RR, Clone:242240A8) and CoraLite®488-Conjugated Goat Anti-Rabbit IgG(H+L) (SA00013-2)(red), or 0.25 ug Rabbit IgG Isotype Control RecAb (98136-1-RR, Clone: 240953C9) (blue). Cells were fixed with 4% PFA and permeabilized with Flow Cytometry Perm Buffer (PF00011-C).