

For Research Use Only

RAD50 Recombinant antibody, PBS Only (Capture/Detector)

Catalog Number: 84969-2-PBS



Basic Information

Catalog Number:

84969-2-PBS

Concentration:

1 mg/ml

Source:

Rabbit

Isotype:

IgG

Immunogen Catalog Number:

AG29949

GenBank Accession Number:

NM_005732

GeneID (NCBI):

10111

UNIPROT ID:

Q92878

Full Name:

RAD50 homolog (S. cerevisiae)

Calculated MW:

154 kDa

Purification Method:

Protein A purification

CloneNo.:

242541D1

Applications

Tested Applications:

Cytometric bead array, Sandwich ELISA, Indirect ELISA,
Sample test

Species Specificity:

human

Background Information

Storage

Storage:

Store at -80°C.

The product is shipped with ice packs. Upon receipt, store it immediately at -80°C

Storage Buffer:

PBS only, pH7.3

For technical support and original validation data for this product please contact:

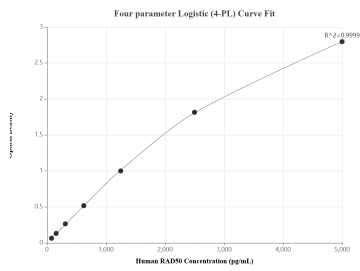
T: 4006900926

E: Proteintech-CN@ptglab.com

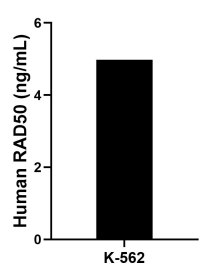
W: ptgcn.com

This product is exclusively available under Proteintech Group brand and is not available to purchase from any other manufacturer.

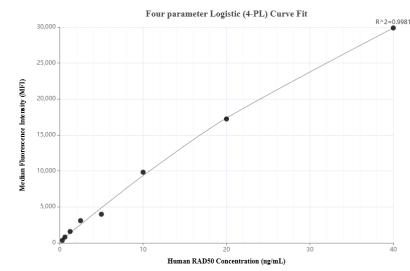
Selected Validation Data



Sandwich ELISA standard curve of MP01720-3, Human RAD50 Recombinant Matched Antibody Pair - PBS only. 84969-1-PBS was coated to a plate as the capture antibody and incubated with serial dilutions of standard Ag29949. 84969-2-PBS was HRP conjugated as the detection antibody. Range: 78.1-5000 pg/mL



The mean RAD50 concentration was determined to be 5.0 ng/mL in K-562 cell extract based on a 2.4 mg/mL extract load.



Cytometric bead array standard curve of MP01720-2, RAD50 Recombinant Matched Antibody Pair, PBS Only. Capture antibody: 84969-2-PBS. Detection antibody: 84969-3-PBS. Standard: Ag29949. Range: 0.313-40 ng/mL