

For Research Use Only

# RAD50 Recombinant antibody, PBS Only (Capture)

Catalog Number: 84969-1-PBS



## Basic Information

Catalog Number: 84969-1-PBS	GenBank Accession Number: NM_005732	Purification Method: Protein A purification
Concentration: 1 mg/ml	GeneID (NCBI): 10111	CloneNo.: 242541B5
Source: Rabbit	UNIPROT ID: Q92878	
Isotype: IgG	Full Name: RAD50 homolog (S. cerevisiae)	
Immunogen Catalog Number: AG29949	Calculated MW: 154 kDa	

## Applications

**Tested Applications:**  
Cytometric bead array, Sandwich ELISA, Indirect ELISA,  
Sample test

**Species Specificity:**  
human

## Background Information

### Storage

**Storage:**  
Store at -80°C.  
**The product is shipped with ice packs. Upon receipt, store it immediately at -80°C**

**Storage Buffer:**  
PBS Only

For technical support and original validation data for this product please contact:

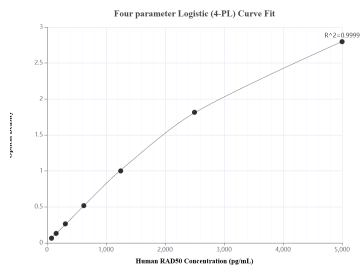
T: 4006900926

E: [Proteintech-CN@ptglab.com](mailto:Proteintech-CN@ptglab.com)

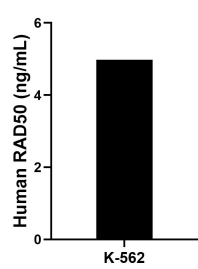
W: [ptgcn.com](http://ptgcn.com)

**This product is exclusively available under Proteintech Group brand and is not available to purchase from any other manufacturer.**

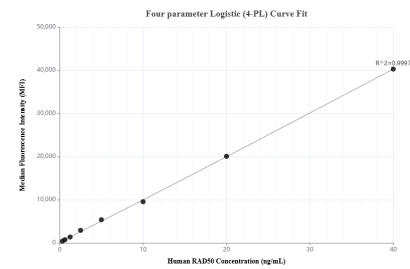
## Selected Validation Data



Sandwich ELISA standard curve of MP01720-3, Human RAD50 Recombinant Matched Antibody Pair - PBS only. 84969-1-PBS was coated to a plate as the capture antibody and incubated with serial dilutions of standard Ag29949. 84969-2-PBS was HRP conjugated as the detection antibody. Range: 78.1-5000 pg/mL



The mean RAD50 concentration was determined to be 5.0 ng/mL in K-562 cell extract based on a 2.4 mg/mL extract load.



Cytometric bead array standard curve of MP01720-1, RAD50 Recombinant Matched Antibody Pair, PBS Only. Capture antibody: 84969-1-PBS. Detection antibody: 84969-3-PBS. Standard: Ag29949. Range: 0.313-40 ng/mL