

For Research Use Only

RBM25 Recombinant antibody

Catalog Number: 84968-4-RR



Basic Information

Catalog Number:

84968-4-RR

Concentration:

1000 µg/ml

Source:

Rabbit

Isotype:

IgG

Immunogen Catalog Number:

AG18244

GenBank Accession Number:

BC113389

GeneID (NCBI):

58517

UNIPROT ID:

P49756

Full Name:

RNA binding motif protein 25

Calculated MW:

843 aa, 100 kDa

Observed MW:

110-120 kDa

Purification Method:

Protein A purification

CloneNo.:

242526B7

Recommended Dilutions:

WB 1:5000-1:50000

IF/ICC 1:250-1:1000

Applications

Tested Applications:

WB, IF/ICC, ELISA

Species Specificity:

human, mouse

Positive Controls:

WB : HCT 116 cells, HEK-293 cells, HeLa cells, Jurkat cells, NIH/3T3 cells

IF/ICC : HeLa cells,

Background Information

RNA-binding protein 25 (RBM25), also named as Protein S164 or RNPC7, is a 843 amino acid protein, which contains one RRM domain and one PWI domain. RBM25 localizes in the nucleus and cytoplasm. RBM25 acts as a regulator of alternative pre-mRNA splicing and is involved in apoptotic cell death through the regulation of the apoptotic factor BCL2L1 isoform expression.

Storage

Storage:

Store at -20°C. Stable for one year after shipment.

Storage Buffer:

PBS with 0.02% sodium azide and 50% glycerol pH 7.3.

Aliquoting is unnecessary for -20°C storage

For technical support and original validation data for this product please contact:

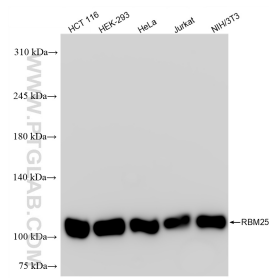
T: 4006900926

E: Proteintech-CN@ptglab.com

W: ptgcn.com

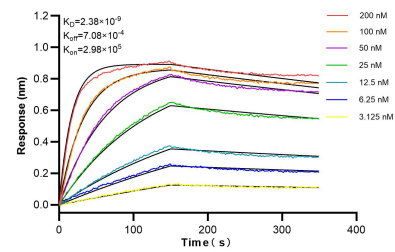
This product is exclusively available under Proteintech Group brand and is not available to purchase from any other manufacturer.

Selected Validation Data



Various lysates were subjected to SDS PAGE followed by western blot with 84968-4-RR (RBM25 antibody) at dilution of 1:10000 incubated at room temperature for 1.5 hours.

Immunofluorescent analysis of (4% PFA) fixed HeLa cells using RBM25 antibody (84968-4-RR, Clone: 242526B7) at dilution of 1:500 and CoraLite® 488-Conjugated Goat Anti-Rabbit IgG(H+L) (SA00013-2), CL594-Phalloidin (red).



Biolayer interferometry (BLI) kinetic assays of 84968-4-RR against Human RBM25 were performed. The affinity constant is 2.38 nM.