

For Research Use Only

PTH Recombinant antibody, PBS Only (Detector)

Catalog Number: 84960-3-PBS



Basic Information

Catalog Number:

84960-3-PBS

Size:

1 mg/ml

Source:

Rabbit

Isotype:

IgG

GenBank Accession Number:

NM_000315.4

GeneID (NCBI):

5741

UNIPROT ID:

P01270

Full Name:

parathyroid hormone

Calculated MW:

13kDa

Purification Method:

Protein A purification

CloneNo.:

242608F7

Applications

Tested Applications:

Cytometric bead array, Sandwich ELISA, Indirect ELISA, Sample test

Species Specificity:

human

Background Information

Storage

Storage:

Store at -80°C.

The product is shipped with ice packs. Upon receipt, store it immediately at -80°C

Storage Buffer:

PBS Only

For technical support and original validation data for this product please contact:

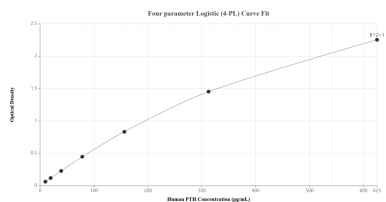
T: 4006900926

E: Proteintech-CN@ptglab.com

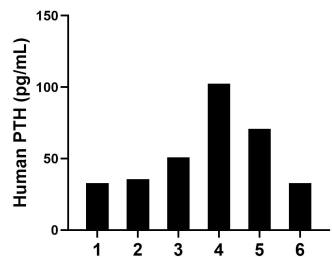
W: ptgcn.com

This product is exclusively available under Proteintech Group brand and is not available to purchase from any other manufacturer.

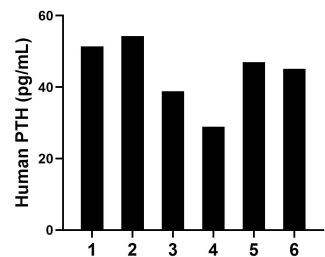
Selected Validation Data



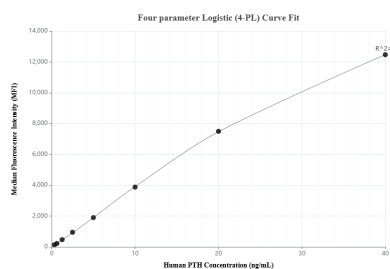
Sandwich ELISA standard curve of MP01717-3, Human PTH Recombinant Matched Antibody Pair - PBS only. 84960-4-PBS was coated to a plate as the capture antibody and incubated with serial dilutions of standard Eg3191. 84960-3-PBS was HRP conjugated as the detection antibody. Range: 9.77-625 pg/mL



Plasma of six individual healthy human donors was measured. The PTH concentration of detected samples was determined to be 54.2 ng/mL with a range of 32.7-102.4 pg/mL



Serum of six individual healthy human donors was measured. The PTH concentration of detected samples was determined to be 44.3 pg/mL with a range of 28.9-54.3 pg/mL



Cytometric bead array standard curve of MP01717-1, PTH Recombinant Matched Antibody Pair, PBS Only. Capture antibody: 84960-1-PBS. Detection antibody: 84960-3-PBS. Standard: Eg3191. Range: 0.313-40 ng/mL