

For Research Use Only

USP33 Recombinant antibody, PBS Only (Capture/Detector)

Catalog Number: 84958-2-PBS



Basic Information

Catalog Number:

84958-2-PBS

Concentration:

1 mg/ml

Source:

Rabbit

Isotype:

IgG

Immunogen Catalog Number:

AG14268

GenBank Accession Number:

BC016663

GeneID (NCBI):

23032

UNIPROT ID:

Q8TEY7

Full Name:

ubiquitin specific peptidase 33

Calculated MW:

942 aa, 107 kDa

Purification Method:

Protein A purification

CloneNo.:

242535B10

Applications

Tested Applications:

Cytometric bead array, Sandwich ELISA, Indirect ELISA,
Sample test

Species Specificity:

human

Background Information

Storage

Storage:

Store at -80°C.

The product is shipped with ice packs. Upon receipt, store it immediately at -80°C

Storage Buffer:

PBS Only

For technical support and original validation data for this product please contact:

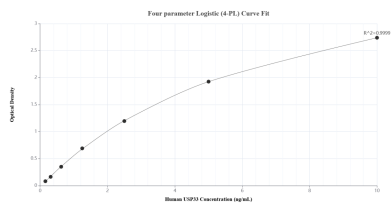
T: 4006900926

E: Proteintech-CN@ptglab.com

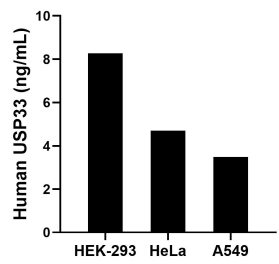
W: ptgcn.com

This product is exclusively available under Proteintech Group brand and is not available to purchase from any other manufacturer.

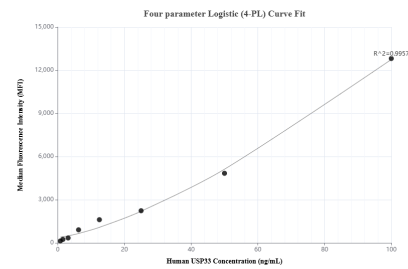
Selected Validation Data



Sandwich ELISA standard curve of MP01703-3, Human USP33 Recombinant Matched Antibody Pair - PBS only. 84958-1-PBS was coated to a plate as the capture antibody and incubated with serial dilutions of standard Ag14268. 84958-2-PBS was HRP conjugated as the detection antibody. Range: 0.156-10 ng/mL.



The mean USP33 concentration was determined to be 8.27 ng/mL in HEK-293 cell extract based on a 2.7 mg/mL extract load, 4.70 ng/mL in HeLa cell extract based on a 1.30 mg/mL extract load and 3.49 ng/mL in A549 cell extract based on a 1.50 mg/mL extract load.



Cytometric bead array standard curve of MP01703-2, USP33 Recombinant Matched Antibody Pair, PBS Only. Capture antibody: 84958-2-PBS. Detection antibody: 84958-1-PBS. Standard: Ag14268. Range: 0.781-100 ng/mL.