

For Research Use Only

USP33 Recombinant antibody, PBS Only (Capture/Detector)

Catalog Number: 84958-1-PBS



Basic Information

Catalog Number: 84958-1-PBS	GenBank Accession Number: BC016663	Purification Method: Protein A purification
Concentration: 1 mg/ml	GeneID (NCBI): 23032	CloneNo.: 242535A6
Source: Rabbit	UNIPROT ID: Q8TEY7	
Isotype: IgG	Full Name: ubiquitin specific peptidase 33	
Immunogen Catalog Number: AG14268	Calculated MW: 942 aa, 107 kDa	

Applications

Tested Applications:
IF/ICC, Cytometric bead array, Sandwich ELISA,
Indirect ELISA, Sample test

Species Specificity:
human

Background Information

USP33 (Ubiquitin carboxyl-terminal hydrolase 33) is also named as KIAA1097, VDU1 and belongs to the peptidase C19 family. This protein, originally identified as a von Hippel-Lindau tumor suppressor (VHL) protein-interacting deubiquitinating enzyme, binds to the Robo1 receptor, and that USP33 is required for Slit responsiveness in breast cancer cells (PMID:19706539). The localization of USP33 is broadly confined to the secretory pathway, with all variants localizing to endoplasmic reticulum-associated structures (PMID:21801292). It has 3 isoforms produced by alternative splicing.

Storage

Storage:
Store at -80°C.
The product is shipped with ice packs. Upon receipt, store it immediately at -80°C

Storage Buffer:
PBS Only

For technical support and original validation data for this product please contact:

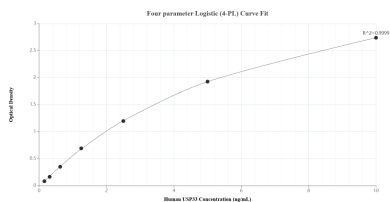
T: 4006900926

E: Proteintech-CN@ptglab.com

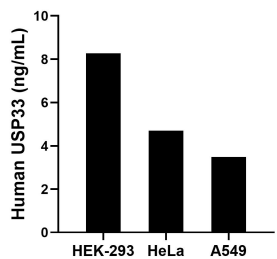
W: ptgcn.com

This product is exclusively available under Proteintech Group brand and is not available to purchase from any other manufacturer.

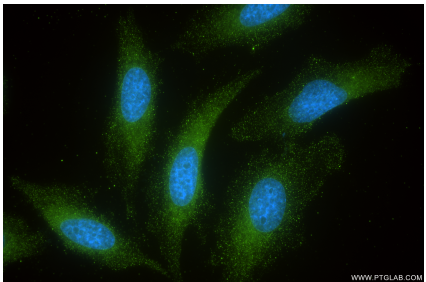
Selected Validation Data



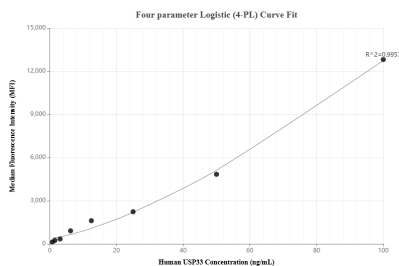
Sandwich ELISA standard curve of MP01703-3, Human USP33 Recombinant Matched Antibody Pair - PBS only. 84958-1-PBS was coated to a plate as the capture antibody and incubated with serial dilutions of standard Ag14268. 84958-2-PBS was HRP conjugated as the detection antibody. Range: 0.156-10 ng/mL.



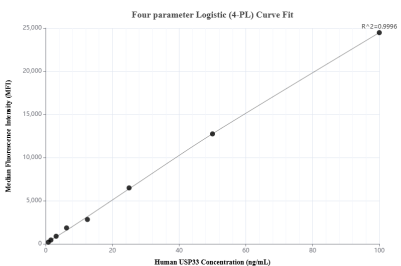
The mean USP33 concentration was determined to be 8.27 ng/mL in HEK-293 cell extract based on a 2.7 mg/mL extract load, 4.70 ng/mL in HeLa cell extract based on a 1.30 mg/mL extract load and 3.49 ng/mL in A549 cell extract based on a 1.50 mg/mL extract load.



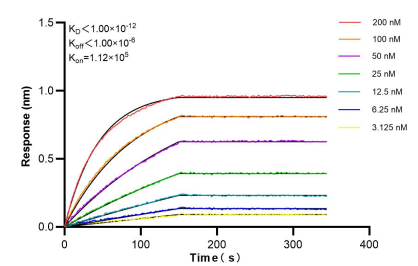
Immunofluorescent analysis of (-20°C Ethanol) fixed HeLa cells using USP33 antibody (84958-1-RR, Clone: 242535A6) at dilution of 1:400 and Coralite®488-Conjugated Goat Anti-Rabbit IgG(H+L) (SA00013-2). This data was developed using the same antibody clone with 84958-1-PBS in a different storage buffer formulation.



Cytometric bead array standard curve of MP01703-2, USP33 Recombinant Matched Antibody Pair, PBS Only. Capture antibody: 84958-2-PBS. Detection antibody: 84958-1-PBS. Standard: Ag14268. Range: 0.781-100 ng/mL.



Cytometric bead array standard curve of MP01703-1, USP33 Recombinant Matched Antibody Pair, PBS Only. Capture antibody: 84958-1-PBS. Detection antibody: 84958-3-PBS. Standard: Ag14268. Range: 0.781-100 ng/mL.



Bi-layer interferometry (BLI) kinetic assays of 84958-1-RR against Human USP33 were performed. The affinity constant is below 1 pM.