

For Research Use Only

RCN2 Recombinant antibody, PBS Only (Detector)

Catalog Number: 84956-2-PBS



Basic Information

Catalog Number: 84956-2-PBS	GenBank Accession Number: BC004892	Purification Method: Protein A purification
Concentration: 1 mg/ml	GeneID (NCBI): 5955	CloneNo.: 242612D10
Source: Rabbit	UNIPROT ID: Q14257	
Isotype: IgG	Full Name: reticulocalbin 2, EF-hand calcium binding domain	
Immunogen Catalog Number: AG0247	Calculated MW: 37 kDa	

Applications

Tested Applications:
Cytometric bead array, Sandwich ELISA, Indirect ELISA,
Sample test

Species Specificity:
human

Background Information

Storage

Storage:
Store at -80°C.
The product is shipped with ice packs. Upon receipt, store it immediately at -80°C

Storage Buffer:
PBS Only

For technical support and original validation data for this product please contact:

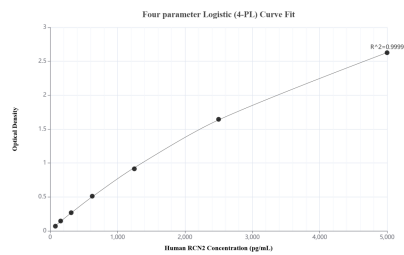
T: 4006900926

E: Proteintech-CN@ptglab.com

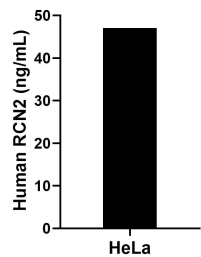
W: ptgcn.com

This product is exclusively available under Proteintech Group brand and is not available to purchase from any other manufacturer.

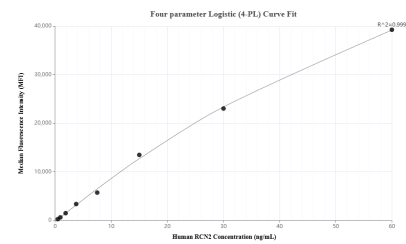
Selected Validation Data



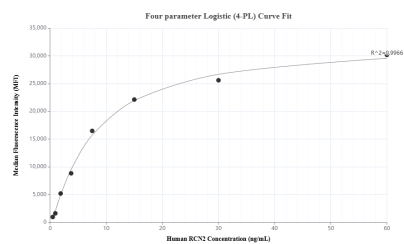
Sandwich ELISA standard curve of MP01713-1, Human RCN2 Recombinant Matched Antibody Pair - PBS only. 84956-3-PBS was coated to a plate as the capture antibody and incubated with serial dilutions of standard Ag0247. 84956-2-PBS was HRP conjugated as the detection antibody. Range: 78.1-5000 pg/mL



The mean RCN2 concentration was determined to be 47.0 pg/mL in HeLa cell extract based on a 1.8 mg/mL extract load.



Cytometric bead array standard curve of MP01713-1, RCN2 Recombinant Matched Antibody Pair, PBS Only. Capture antibody: 84956-3-PBS. Detection antibody: 84956-2-PBS. Standard: Ag0247. Range: 0.469-60 ng/mL



Cytometric bead array standard curve of MP01713-2, RCN2 Recombinant Matched Antibody Pair, PBS Only. Capture antibody: 84956-1-PBS. Detection antibody: 84956-2-PBS. Standard: Ag0247. Range: 0.469-60 ng/mL